



Mind Profile

2026



About Us

2026

MIND is a Saudi brand owned by Judah alhayah Ltd., built on over 20 years of experience in the development and execution of integrated projects. Since its inception, MIND has remained committed to delivering professional solutions that combine creative design, disciplined execution, and precise adherence to quality and functionality.

Headquartered in Riyadh – the capital of the Kingdom of Saudi Arabia, MIND oversees its operations, projects, and partnerships across the Kingdom and the region, strengthening its position as a trusted partner to government entities, the private sector, and nonprofit organizations.

www.mind.com.sa

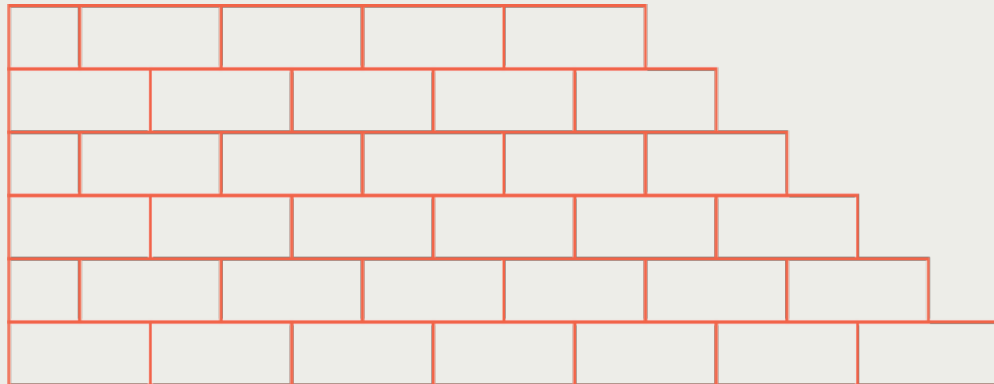
info@mind.com.sa

9200 247 22

+966 50 006 9627

Identity & Foundation

MIND represents the strategic extension of Judah Alayah Ltd., a company established in 2005 with deep expertise in the development of institutional and community environments. The brand was founded to offer specialized and integrated solutions in the design and execution of high-value projects, with a clear focus on innovation, sustainability, and precision, in alignment with the ambitions of the Saudi market and a spirit of institutional excellence.



Key Clients



795+ clients served, including ministries, authorities, and private companies.

Browse our [Projects](#) section to discover our recent work.

Key Clients



795+ clients served, including ministries, authorities, and private companies.

Browse our [Projects](#) section to discover our recent work.

Key Clients



795+ clients served, including ministries, authorities, and private companies.

Browse our **Projects** section to discover our recent work.

VISION

To be the

FIRST SAUDI HOUSE OF EXPERTISE
AND FACTORY OF INNOVATION

in the development and fit-out of exceptional projects—creating high-quality environments that reflect professionalism and embody a national identity with a global outlook.

Mind in Numbers

<p>20⁺</p> <p>years of multidisciplinary design and execution experience.</p>	<p>1367⁺</p> <p>completed projects across various regions in Saudi Arabia</p>
<p>795⁺</p> <p>clients served, including ministries, authorities, and private companies.</p>	<p>1M</p> <p>M² of delivered spaces across sectors.</p>

Highlights



One of our projects was published in the book *Best Interior Designs in the Middle East 2020*.

Our Services

01.



PROJECT DESIGN

02.



FIT-OUT & FURNISHING

03.

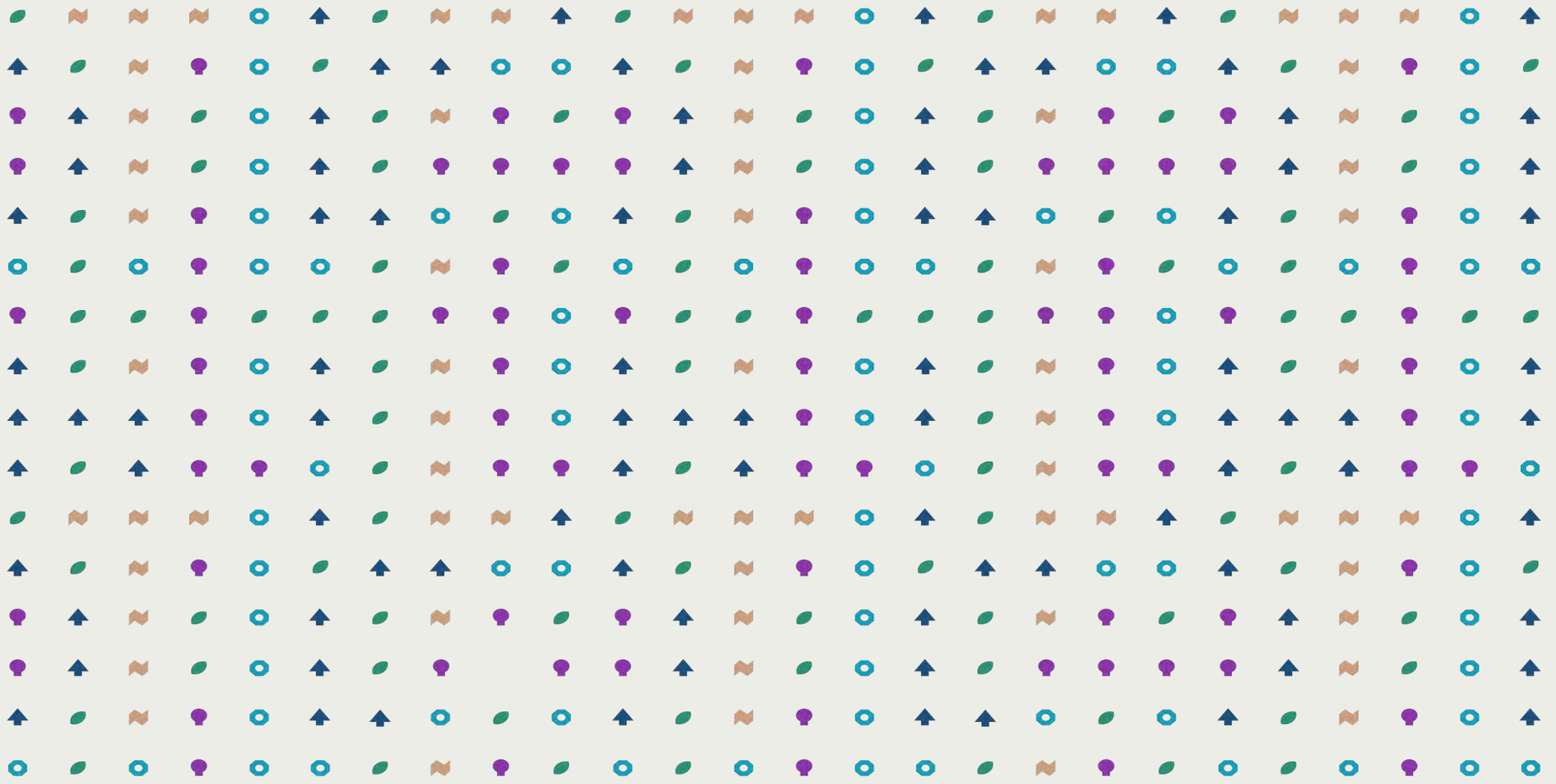


SUPERVISION & PROJECT
MANAGEMENT

04.



EXECUTION

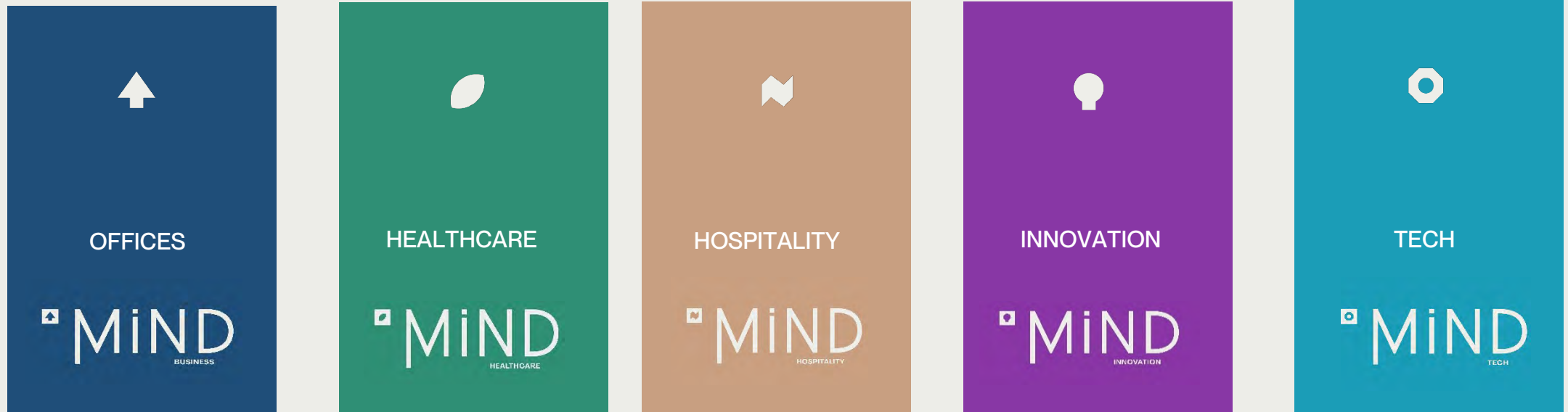


Mind Sectors



Sectors We Serve

MIND operates across five key sectors that form essential pillars in the Kingdom's urban and developmental transformation. The company offers comprehensive turnkey solutions, including concept development, design, execution, and fully operational handover:



Our Projects

Selected Projects List

NO.	Project	Sector	Client	Space	Year
01	Command and Control Center – NEOM	Offices	NEOM	3000 m²	2024
02	Headquarters of the Mohammed bin Salman Foundation (Misk)	Offices	The Mohammed bin Salman Foundation (Misk)	1300 m²	2018
03	The Governor’s Office and Executive Offices	Offices	Royal Commission for AIUla	700 m²	2019
04	Headquarters of the Saudi Esports Federation	Offices	The Saudi Esports Federation	4000 m²	2022
05	Office Complex	Offices	National Cybersecurity Authority	700 m²	2020
06	Headquarters of juin company	Offices	Juin real estat company	1000 m²	2025

Selected Projects List

NO.	Project	Sector	Client	Space	Year
07	Headquarters of the Health Endowment Fund	Offices	The Health Endowment Fund	600 m²	2023
08	Center of Excellence – Virtual Hospital	Offices	Lean Business Services – Ministry of Defense	8000 m²	2024
09	Headquarters of the Development Authorities Support Center	Offices	The Development Authorities Support Center	1300 m²	2024
10	Badeel Energy Company	Offices	Public Investment Fund	600 m²	2024
11	Saudi Information Technology Company (SITE)	Offices	Public Investment Fund	3800 m²	2019
12	Meras Center	Offices	Ministry of Commerce	1200 m²	2017
13	National Center for Palms and Dates	Offices	Palms and Dates Center	1200 m²	2018

Selected Projects List

NO.	Project	Sector	Client	Space	Year
14	Headquarters of Tilad Company	Offices	Tilad Company	1000 m²	2018
15	Musharaka Capital	Offices	Musharaka Capital	300 m²	2023
16	Headquarters of Alpha Digital	Offices	Alpha Digital Company	1300 m²	2025
17	The Tanmiah Food Company- Innovation Center	Offices	The Tanmiah Food Company	1000 m²	2025
18	Office Tower	Offices	National Housing Company	-	2019
19	First Mission Company (M1)	Offices	First Mission Company (M1)	-	-
20	Chemanol Headquarters	Offices	Chemanol Company	600 m²	2023

Selected Projects List

NO.	Project	Sector	Client	Space	Year
21	Headquarters of Ruba Real Estate Development Company	Offices	Ruba Real Estate Development Company	400 m²	2025
22	The Arab Investment Company	Offices	The Arab Investment Company	1200 m²	2026
23	Kaden Real Estate Development Company	Offices	Kaden Real Estate Development Company	2500 m²	2026
24	Tazayud Real Estate Development	Offices	Al Dowayan Holding	900 m²	2024
25	Headquarters of Al-Dowayan Holding	Offices	Al Dowayan Holding	2000 m²	2024
26	Ministry of Health – Mena Emergency Hospital	Healthcare	Ministry of Health	More than 15000 m²	2025
27	Ministry of Health – Mena Aljssr Hospital	Healthcare	Ministry of Health	More than 15000 m²	2025

Selected Projects List

NO.	Project	Sector	Client	Space	Year
28	AURA Center	Healthcare	AURA Center	4000 m²	2022
29	Ministry of Health Children's Hospital - Arar	Healthcare	Ministry of Health	300 beds	2011
30	Ministry of Health – Miqat Hospital	Healthcare	Ministry of Health	300 beds	2014
31	Ministry of Health – Al Jumum Hospital	Healthcare	Ministry of Health	100 beds	2014
32	King Khaled Eye Specialist Hospital	Healthcare	King Khaled Eye Specialist Hospital	5500 m²	2012
33	Mena Medical Complex, Centers, and Clinics	Healthcare	Al Tawuniya Insurance Company	From 500 to 5,000 m² per project	2025
34	King Fahad Medical City – Children's Hospital	Healthcare	King Fahad Medical City	25000 m²	2016

Selected Projects List

NO.	Project	Sector	Client	Space	Year
35	AMAD Hospital - Rehabilitation Department	Healthcare	AMAD Hospital	--	2026
36	Fairmont Makkah Clock Royal Tower	Hospitality	Abraj Al Bait Towers	4000 m²	2023
37	Mövenpick Hotel & Residences Makkah	Hospitality	Abraj Al Bait Towers	5000 m²	2024
38	Swissotel Al Maqam Hotel	Hospitality	Abraj Al Bait Towers	47 floors	2024
39	Swissotel Makkah Hotel	Hospitality	Abraj Al Bait Towers	47 floors	2024
40	The Valley Resort	Hospitality	The Valley Resort	15000 m²	2017
41	Business Center - Mansard	Hospitality	The Mansard Hotel	5000 m²	2024

Selected Projects List

NO.	Project	Sector	Client	Space	Year
42	Le Bleu Train Restaurant	Hospitality	Al Hazm Mall – Doha	2000 m²	2017
43	Vogue Restaurant	Hospitality	Vogue Restaurant	1300 m²	2018
44	Saqeefah Towers	Hospitality	Saqeefah Real Estate	2000 m²	2025
45	The Label Spa	Hospitality	The Label Spa	400 m²	2017
46	Mutiara Hotel	Hospitality	Mutiara Hotel	-	2017
47	Turquoise Mountain store – Alula	Hospitality	Turquoise Mountain	500 m²	2024
48	King Abdulaziz University Museum	Innovation	King Abdulaziz University	26000 m²	2018

Selected Projects List

NO.	Project	Sector	Client	Space	Year
49	The Tanmiah Food Company- Innovation Center	Innovation	The Tanmiah Food Company	1000 m²	2025
50	Command and Control Center – NEOM	Innovation	NEOM	3000 m²	2024
51	SITE – Innovation Center	Innovation	Public Investment Fund	3800 m²	2018
52	Center of Excellence – Virtual Hospital	Innovation	Lean Business Services – Ministry of Defense	8000 m²	2024
53	Headquarters of the Saudi Esports Federation	Innovation	The Saudi Esports Federation	4000 m²	2022
54	Tamweel Aloula - Sales Hub	Innovation	Tamweel Aloula company	700 m²	2023
55	Center of Excellence – Virtual Hospital	TECH	Ministry of Defense	8000 m²	2024

Selected Projects List

NO.	Project	Sector	Client	Space	Year
56	SITE	TECH	Public Investment Fund	3800 m²	2018
57	National Cybersecurity Authority Center	TECH	National Cybersecurity Authority	700 m²	2020
58	Alpha Digital Company	TECH	Alpha Digital Company	1300 m²	2025
59	Accelerated Solutions Company	TECH	Accelerated Solutions Company	2000 m²	2024
60	Etihad Atheeb Telecom Tower	TECH	Etihad Atheeb Telecom	3500 m²	2025

Strategic Projects

01



Misk Foundation Headquarters

Design and fit-out of the Mohammed bin Salman Foundation (Misk) headquarters in Riyadh, reflecting innovation and youth empowerment.

02



NEOM - Command and Control Center

Interior design of NEOM's Command and Control Center, a cutting-edge operations hub for the future city.

03



The First Smart Virtual Hospital

Saudi Arabia's first smart virtual hospital, a pioneering healthcare innovation project with Lean Business Services.

Strategic Projects

04



The Saudi Esports Federation

Full headquarters design for the Saudi Esports Federation in Riyadh, built for the future of competitive gaming.

05



Public Investment Fund

Strategic partnership with PIF across flagship projects including Misk, NEOM, SITE Digital City, and Badeel Energy.

06



National Cybersecurity Authority

Interior design and execution of the NCA offices in Riyadh, a secure, high-performance work environment.

Strategic Projects

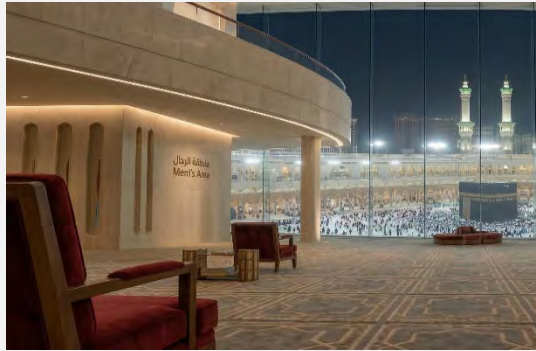
07



Eco-Friendly Hospital – Children's Hospital

Eco-friendly Children's Hospital at King Fahd Medical City, combining sustainability with child-centered healthcare design.

08



The Highest Prayer Area in the World – Clock Tower

Prayer halls in Makkah's Abraj Al Bait Clock Towers across multiple hotels, over 5,000 m² of sacred space.

09



Riyadh Hub Project

Mixed-use development in Riyadh integrating commercial, residential, and leisure components into a modern urban destination.

Tower Projects

Commercial Towers

01

Etihad Atheeb Telecom Tower

- Riyadh
- Interior design – Hotel



02

National Housing Company Tower

- Riyadh
- Interior design – Offices



Commercial Towers

03

Al Murabba Towers 1

- Riyadh
- Interior design – Hotel

04

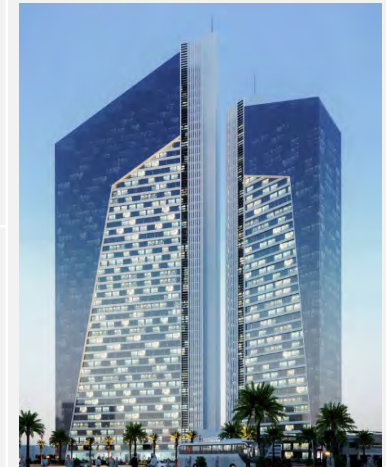
Al Murabba Towers 2

- Riyadh
- Interior design – Offices

05

Saqeefa Towers

- Riyadh
- Interior design – Residential Facilities



Tower Projects

Hotels Towers

01

Mövenpick Hotel

- Makkah – Abraj Al Bait Clock Towers
- Interior design – Hotel

02

Fairmont Hotel

- Makkah – Abraj Al Bait Clock Towers
- Interior design – Prayer Area

03

Swissotel Al Maqam

- Makkah – Abraj Al Bait Clock Towers
- Interior design – Prayer Area

04

Swissotel Makkah

- Makkah – Abraj Al Bait Clock Towers
- Interior design – Prayer Area

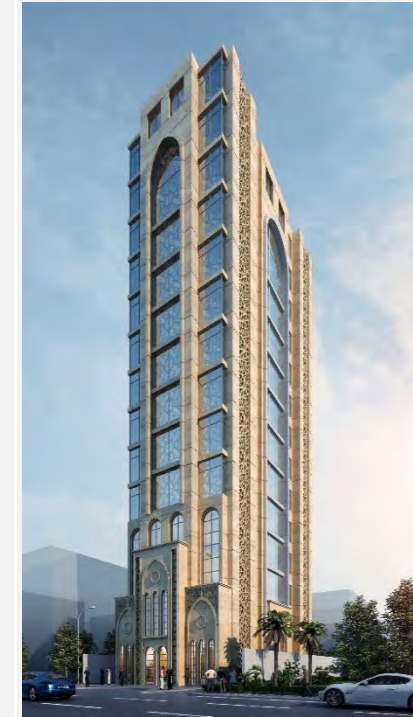


Hotels Towers

05

Mutiara Hotel

- Riyadh
- Interior design & Implementation – Hotel



Strategic Companies

01



Ministry of Health

A partnership in the design and fit-out of healthcare facilities, from specialized hospitals to medical centers across various regions of the Kingdom.

Key Joint Projects:
Children's Hospital – Arar
Mina Emergency Hospital
Al Jumum Hospital

02



AL Ramz Real Estate

Strategic partnership in the design and fit-out of high-quality commercial and residential real estate projects.

Key Joint Projects :
Commercial tower projects
Business complexes
Integrated work environments

Strategic Companies

03

صندوق
الاستثمارات
العامّة
PUBLIC
INVESTMENT FUND



Public investment Fund

Partnering with a portfolio of PIF companies to deliver design and execution services.

Key Joint Projects:

NEOM
BADEEL
LEAN
SITE

04







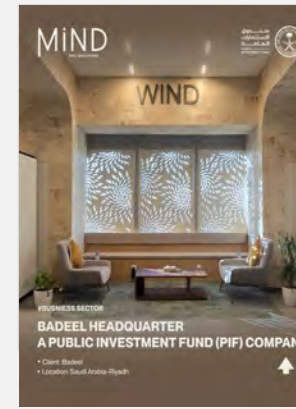



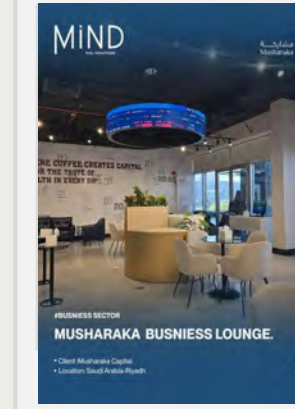
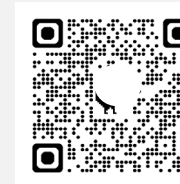
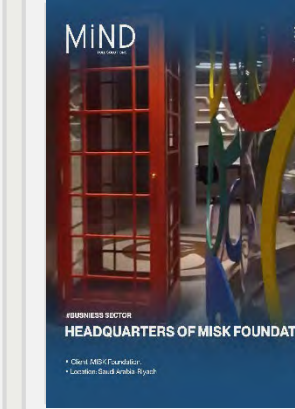

Lean Business Services

A partnership in the design and fit-out of healthcare facilities, from specialized hospitals to medical centers across various regions of the Kingdom.

Key Joint Projects:

Excellence Center – Ministry of Defense
Technology Work Environments
Innovation Center

Projects Exhibition (Reels)

<p>01</p>  <p>MIND ميراس Meras</p> <p>#BUSINESS SECTOR MERAS CENTER</p> <p>• Client: Meras Group • Location: South Arabia - Riyadh</p> <p>Meras Center</p> 	<p>02</p>  <p>MIND THE LABEL</p> <p>#HOSPITALITY SECTOR THE LABEL SPA</p> <p>• Client: The Label • Location: South Arabia - Riyadh</p> <p>The Label Spa</p> 	<p>03</p>  <p>MIND WIND</p> <p>#BUSINESS SECTOR BADEEL HEADQUARTER A PUBLIC INVESTMENT FUND (PIF) COMPANY.</p> <p>• Client: Badeel • Location: South Arabia - Riyadh</p> <p>Badeel Energy</p> 	<p>04</p>  <p>MIND</p> <p>#BUSINESS SECTOR ALPHA DIGITAL INFORMATION & COMMUNICATIONS TECHNOLOGY CO.</p> <p>• Client: Alpha Digital Company • Location: South Arabia - Riyadh</p> <p>Alpha Digital Company</p> 	<p>05</p>  <p>MIND مشاركة Musharaka</p> <p>#BUSINESS SECTOR MUSHARAKA BUSINESS LOUNGE.</p> <p>• Client: Musharaka Capital • Location: South Arabia - Riyadh</p> <p>Musharaka Capital</p> 	<p>06</p>  <p>MIND ميسك Misk</p> <p>#BUSINESS SECTOR HEADQUARTERS OF MISK FOUNDATION</p> <p>• Client: Misk Foundation • Location: South Arabia - Riyadh</p> <p>Misk Foundation</p> 
--	---	--	--	--	--

Saudi Identity Projects

01

Offices



Royal Commission for ALULA

Office of HH the Governor and Executive Office for the Royal Commission for AlUla, blending Saudi heritage with modern elegance.

02

Offices



Talad Heritage Company

Interior design celebrating Saudi cultural heritage through authentic traditional architectural elements.

03

Offices



National Palm & Dates Center

Showcasing Saudi Arabia's iconic agricultural heritage in an immersive, professionally designed environment.

Saudi Identity Projects

04

Hospitality



Dara Hotel

Full interior design in Riyadh, 10,000 m² of hospitality space reflecting Saudi design with contemporary luxury.

05

Innovation



KAU Heritage Museum

King Abdulaziz University Heritage Museum, an innovative space preserving Saudi cultural and educational legacy.

06

Offices



Badeel Energy Company

Modern workspace for PIF's renewable energy subsidiary, reflecting Saudi Arabia's commitment to sustainability.



NEOM نِوَم

#Office Sector

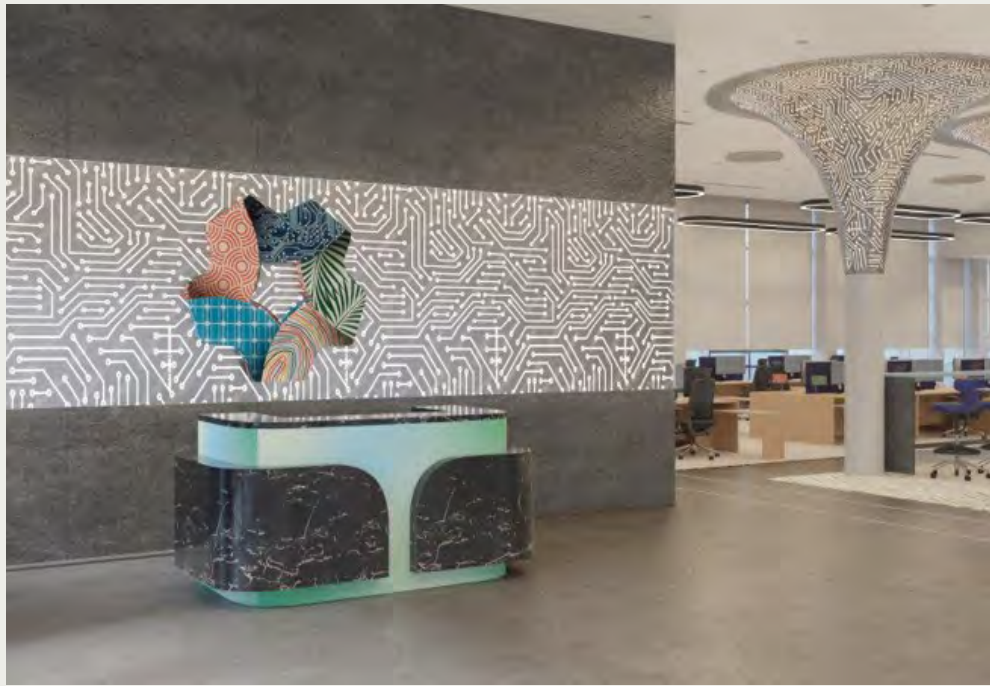
Command and Control Center – NEOM

General Information :

Location : NEOM

Space : 3000 m^2

Year : 2024



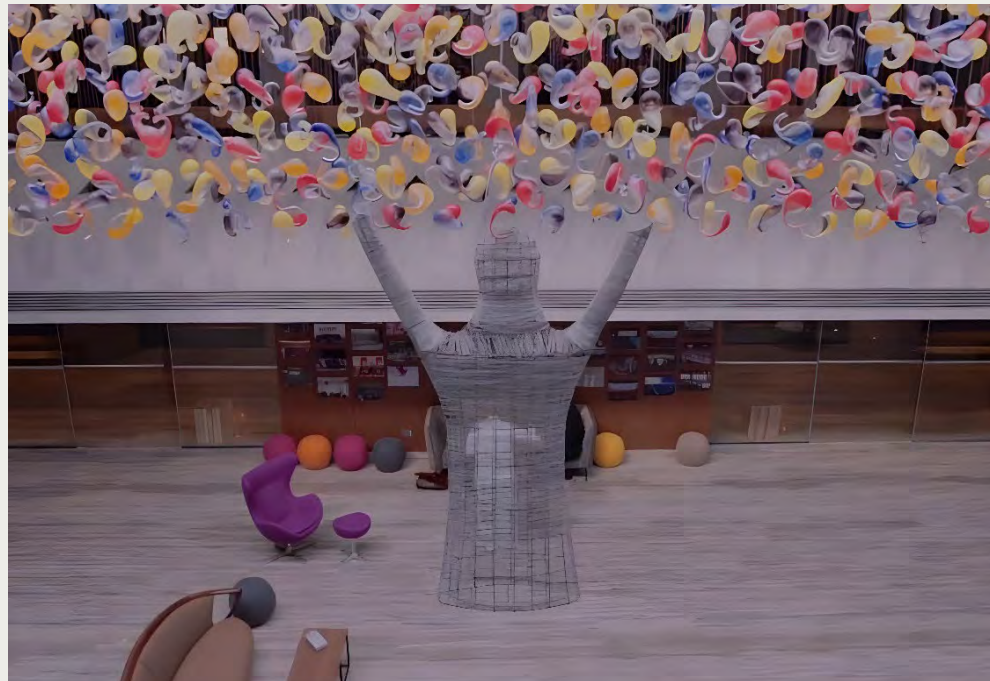


#Office Sector

The Mohammed bin Salman Foundation (Misk)

General Information :

Location : Riyadh
Space : 1300 m²
Year : 2018



المدينة الملكية لمحافظة العلا
Royal Commission for Al-Ula



#Office Sector

Royal Commission for Aula – Office of His Highness the Governor and the Executive Office

General Information :

Location : Alula

Space : 700 m^2

Year : 2019





#Office Sector

Saudi Esports Federation – Headquarters

General Information :

Location : Riyadh
Space : 4000 m^2
Year : 2022





الهيئة الوطنية
للأمن السيبراني
National Cybersecurity Authority

#Office Sector

National Cybersecurity Authority

General Information :

Location : Riyadh

Year : 2020



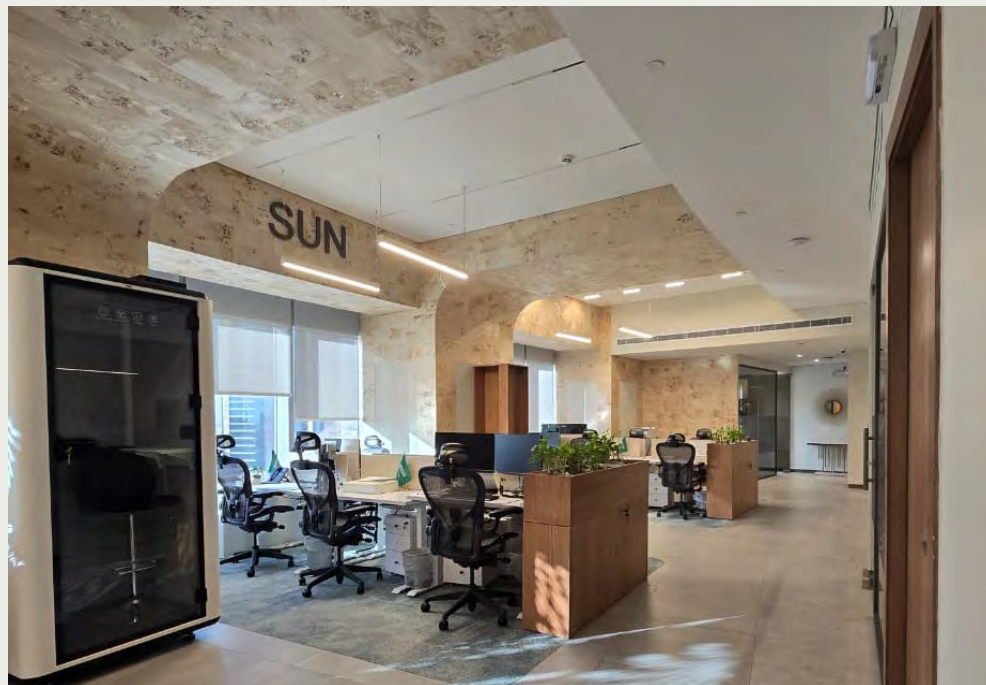


#Office Sector

Public Investment Fund – Badeel Company

General Information :

Location : Riyadh
Space : 600 m^2
Year : 2024





ALPHA DIGITAL

#TECH Sector

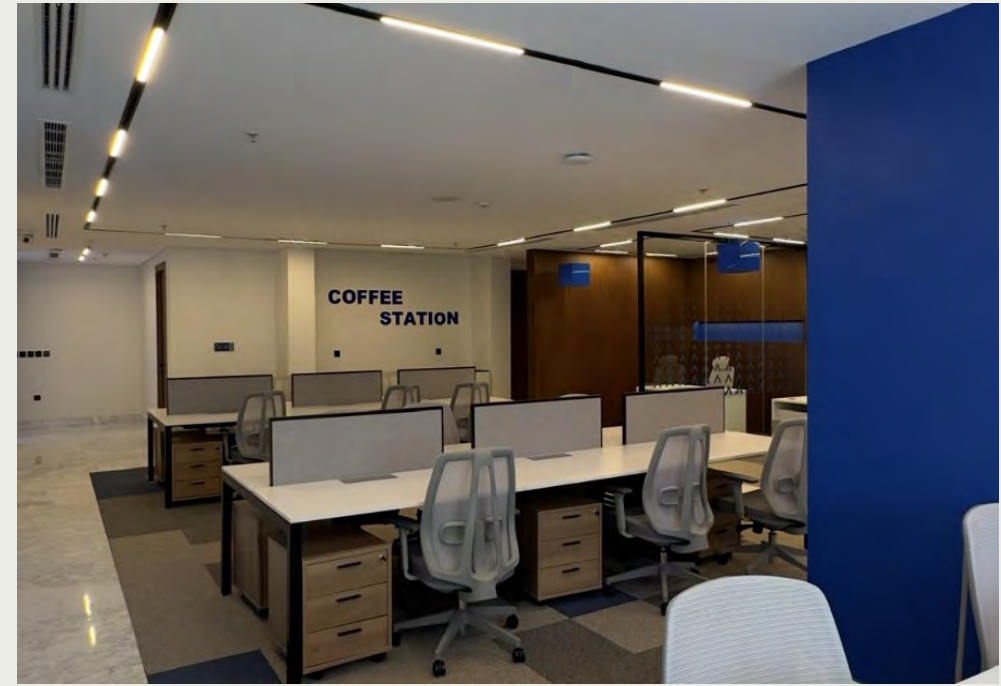
Alpha Digital Company

General Information :

Location : Riyadh

Client : Alpha Digital

Year : 2025





#TECH Sector

Etihad Atheeb Telecom Company

General Information :

Location : Riyadh

Client : Etihad Atheeb

Telecom Company

Year : 2024





#TECH Sector

Accelerated Solutions Company

General Information :

Location : Riyadh
Space : 2000 m^2
Year : 2024



صندوق الوقف الصحي
Health Endowment Fund

#Office Sector

**Health
Endowment Fund**

General Information :

Location : Riyadh
Space : 600 m^2
Year : 2023





#Office Sector

The Arab Investment Company

General Information :

Location : Riyadh
Space : 1200 m^2
Year : 2026





مركز دعم هيئات التطوير
DEVELOPMENT AUTHORITIES SUPPORT CENTER

Office Sector

The Development Authorities Support Center

General Information :

Location : Riyadh
Space : 1300 m^2
Year : 2024





#Office Sector

Reba Real Estate Company

General Information :

Location : Jeddah
Space : 400 m^2
Year : 2025





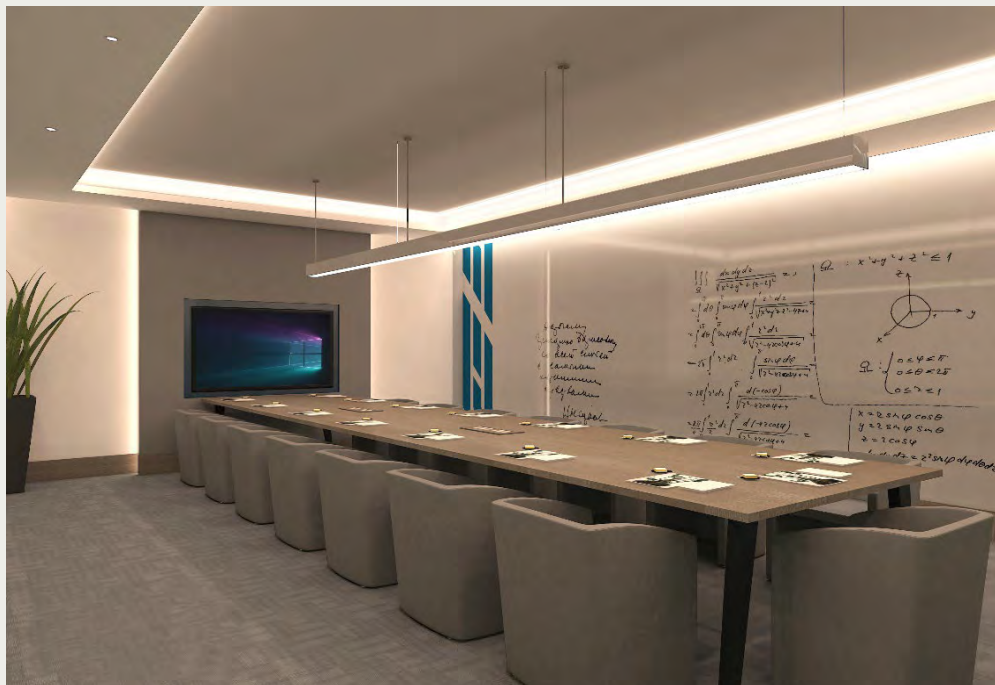
#Office Sector

National Housing Company

General Information :

Location : Riyadh

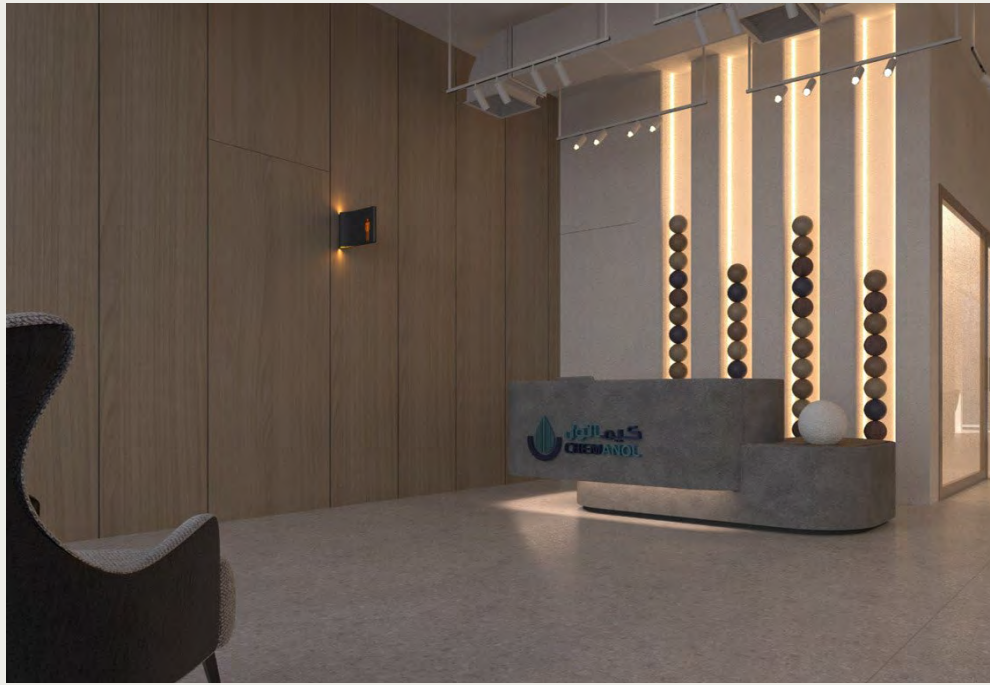
Year : 2019



Chemanol Company

General Information :

Location : Riyadh
Space : 600 m^2
Year : 2023





#Office Sector

Musharaka Capital

General Information :

Location : Riyadh
Space : 200 m^2
Year : 2023





#Office Sector

National Center for Palms and Dates

General Information :

Location : Riyadh
Space : 1200 m^2
Year : 2018



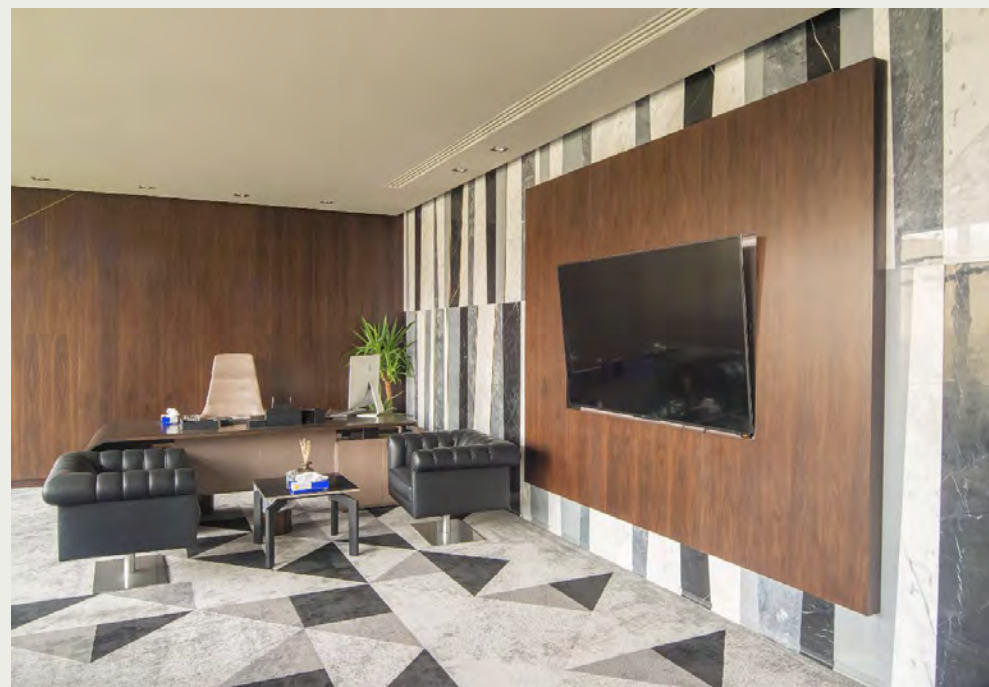


#Office Sector

First Mission Company

General Information :

Location : Riyadh
Space : 1200 m^2
Year : 2018



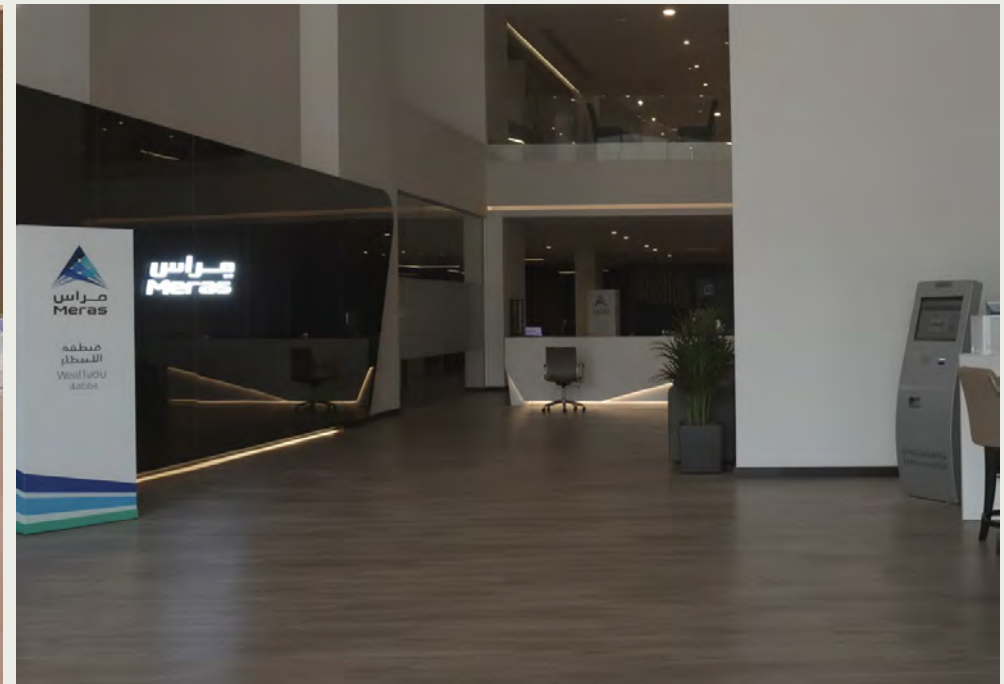


#Office Sector

Meras Center

General Information :

Location : Riyadh
Space : 600 m^2
Year : 2017



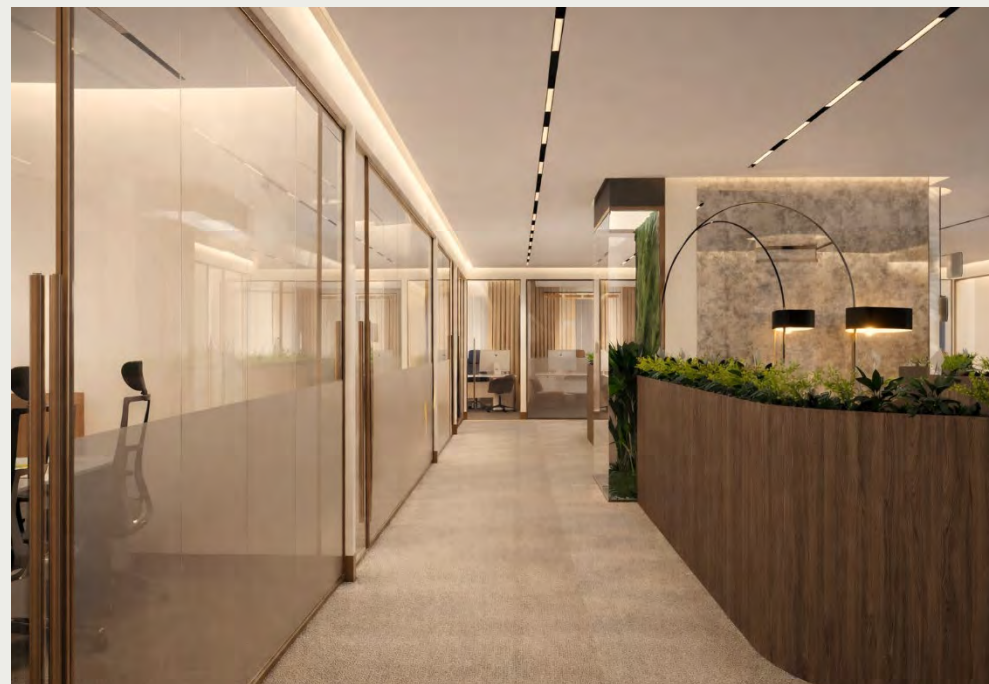


#Office Sector

Juin real estate Co.

General Information :

Location : Riyadh
Space : 1000 m^2
Year : 2025





#Office Sector

Headquarters of Al-Dowayan Holding

General Information :

Location : Dammam

Space : 2000 m^2

Year : 2024





#Office Sector

Tazayud Real Estate Development

General Information :

Location : Dammam

Space : 900 m^2

Year : 2024





#TECH Sector

Lean Business Services - Center of Excellence – Virtual Hospital

General Information :

Location : Riyadh
Space : 8000 m^2
Year : 2024





#Innovation Sector

Lean Business Services - Center of Excellence – Virtual Hospital

General Information :

Location : Riyadh
Space : 8000 m^2
Year : 2024





#Innovation Sector

Public Investment Fund SITE Company

General Information :

Location : Riyadh
Year : 2017





Office Sector

Tilad Corporation Environmental Consulting

General Information :

Location : Riyadh
Space : 1000 m^2
Year : 2018



Site

Office Sector

**Public
Investment Fund
SITE Company**

General Information :

Location : Riyadh
Space : 3800 m^2
Year : 2019





#Innovation Sector

King Abdulaziz University Museum

General Information :

Location : Jeddah

Space : 26000 m^2

Year : 2018



Space: 26000 m^2

17 0010





#Innovation Sector

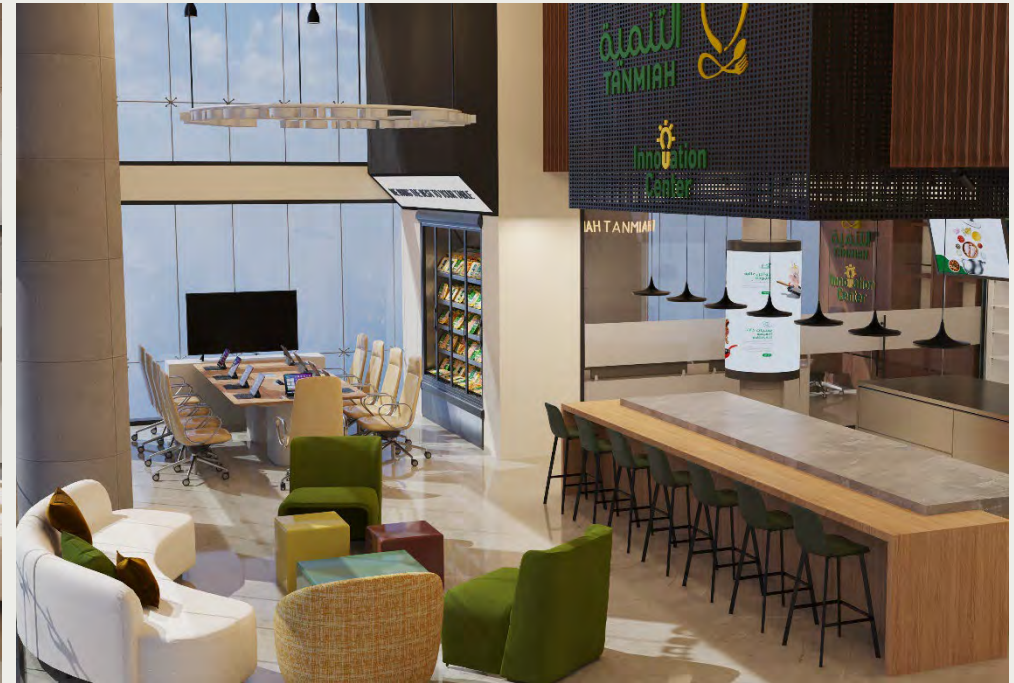
The Tanmiah Food Company Innovation Center

General Information :

Location : Riyadh

Space : 1000 m²

Year : 2025





#Innovation Sector

Tamweel Aloula Sales Hub

General Information :

Location : Al- Dammam

Space : 700 m^2

Year : 2023





#TECH Sector

Public Investment Fund SITE Company

General Information :

Location : Riyadh

Scope of Work:

Supervision

Year : 2017





مدينة الملك فهد الطبية
King Fahad Medical City

#Healthcare Sector

Children's Hospital King Fahd Medical City

General Information :

Location : Riyadh

Space : 25000 m^2

Year : 2016





#Healthcare Sector

Mena Emergency Hospital & Mena Al-jisr Hospital

General Information :

Location : Makkah
Space : More than 15000 m²
Year : 2025





#Healthcare Sector

Tawuniya Hospitals – Mena Health

General Information :

Location : Riyadh

Space : From 500 to 5,000 m² per project

Year : 2025





#Healthcare Sector

Al-Maqat Hospital

General Information :

Location : Makkah
Space : 300 bed
Year : 2014





#Healthcare Sector

Al-Jamum Hospital

General Information :

Location : AL-Jamum

Space : 100 bed

Year : 2014





#Healthcare Sector

AMAD Hospital - Rehabilitation Department

General Information :

Location : AL-Riyadh

Year : 2026



#Hospitality Sector

Mövenpick Hotel Clock Tower

General Information :

Location : Makkah

Year : 2021



#Hospitality Sector

Fairmont Hotel – The Highest Prayer area in the World

General Information :

Location : Makkah
Space : 5000 m²
Year : 2024



سويس أوتيل المقام مكة
swissôtel AL MAQAM
MAKKAH

#Hospitality Sector

Swissotel Almaqam Hotel

General Information :

Location : Makkah
Space : 47 Floor
Year : 2024



مكة سويس اوتيل
swissôtel MAKKAH

#Hospitality Sector

Swissotel Makkah Hotel

General Information :

Location : Makkah
Space : 47 Floor
Year : 2024





#Hospitality Sector

The Valley Resort

General Information :

Location : Riyadh
Space : 15000 m²
Year : 2017



سقيفة SAQEEFAH

#Hospitality Sector

SAQEEFA Palace - 29

General Information :

Location : Riyadh
Space : 2000 m²
Year : 2025



MANSARD

RIYADH

A RADISSON COLLECTION HOTEL

#Hospitality Sector

Mansard Hotel

General Information :

Location : Riyadh

Space : 5000 m²

Year : 2024





#Hospitality Sector

Turquoise Mountain store – Alula

General Information :

Location : Alula

Space : 500 m²

Year : 2024



J9JUR

شركة دور للضيافة
Dur Hospitality Company

#Hospitality Sector

Dara Hotel

General Information :

Location : Riyadh
Space : 10000 m²
Year : 2017





#Hospitality Sector

LE BLEU TRAIN Restaurant

General Information :

Location : Qatar – Doha

Space : 2000 m²

Year : 2017



VOGUE

#Hospitality Sector

VOGUE Restaurant

General Information :

Location : Riyadh
Space : 1300 m²
Year : 2018



VOGUE

#Hospitality Sector

VOGUE Restaurant

General Information :

Location : Riyadh
Space : 1300 m²
Year : 2018





#Hospitality Sector

AURA Elite Gym & Spa

General Information :

Location : Jeddah
Space : 4000 m²
Year : 2022





#Hospitality Sector

Motiara Hotel

General Information :

Location : Riyadh

Year : 2017



THE LABEL

#Hospitality Sector

The Label Spa

General Information :

Location : Riyadh

Space : 400 m²

Year : 2017





Contact us

www.mind.com.sa

info@mind.com.sa

9200 247 22

+966 50 006 9627