



Mind Profile

2025

www.mind.com.sa

info@mind.com.sa

9200 247 22

+966 50 006 9627



About Us

2025

MIND is a Saudi brand owned by Judah alhayah Ltd., built on over 20 years of experience in the development and execution of integrated projects. Since its inception, MIND has remained committed to delivering professional solutions that combine creative design, disciplined execution, and precise adherence to quality and functionality.

Headquartered in Riyadh – the capital of the Kingdom of Saudi Arabia, MIND oversees its operations, projects, and partnerships across the Kingdom and the region, strengthening its position as a trusted partner to government entities, the private sector, and nonprofit organizations..

www.mind.com.sa

info@mind.com.sa

9200 247 22

+966 50 006 9627

Identity & Foundation

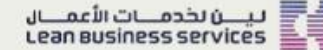
MIND represents the strategic extension of Judah Alayah Ltd., a company established in 2005 with deep expertise in the development of institutional and community environments. The brand was founded to offer specialized and integrated solutions in the design and execution of high-value projects, with a clear focus on innovation, sustainability, and precision, in alignment with the ambitions of the Saudi market and a spirit of institutional excellence.



Key Clients



الهيئة الوطنية
للأمن السيبراني
National Cybersecurity Authority



مسك
مؤسسة محمد بن سلمان
Mohammed Bin Salman
Foundation



مركز دعم هيئات التطوير
DEVELOPMENT AUTHORITIES SUPPORT CENTER



وزارة الصحة
Ministry of Health



شركة السعودية للتقنية المعلومات
Saudi Information Technology Company



التعاونية
tawuniya



الهيئة الملكية لمحافظة العلا
Royal Commission for AlUla



795+ clients served, including ministries, authorities, and private companies.

Browse our **Projects** section to discover our recent work.

www.mind.com.sa

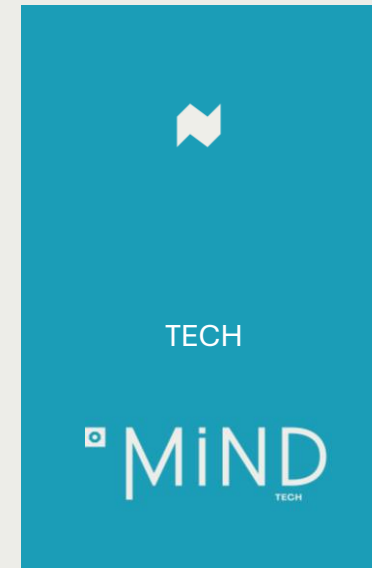
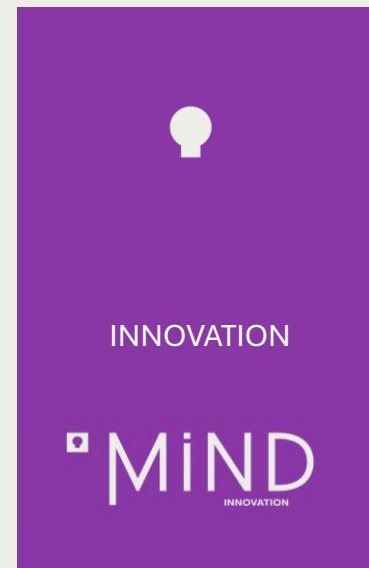
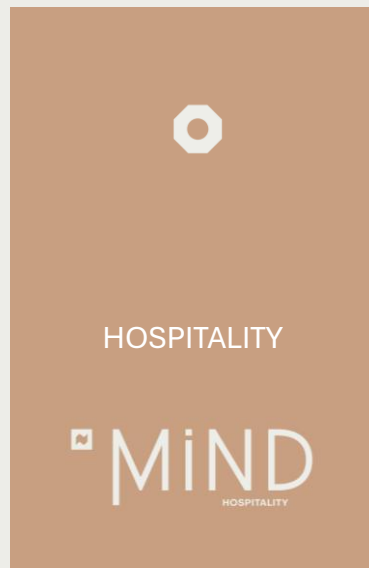
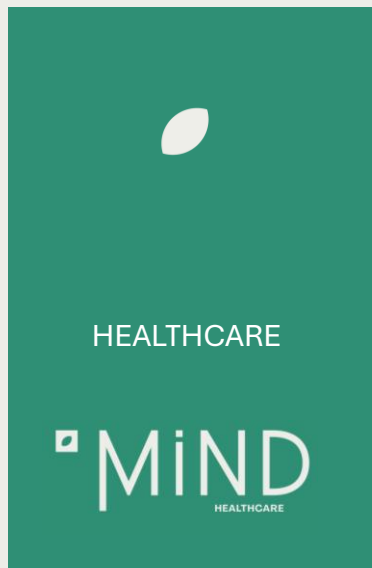
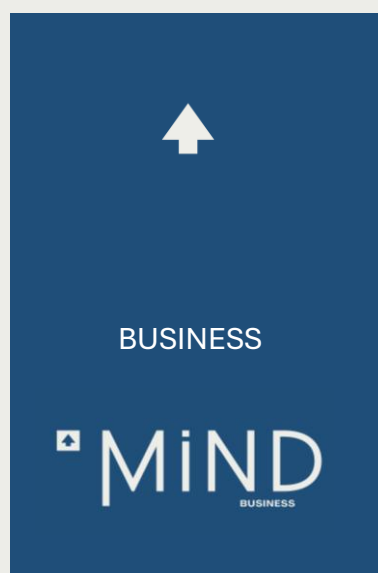
info@mind.com.sa

9200 247 22

+966 50 006 9627

Sectors We Serve

MIND operates across five key sectors that form essential pillars in the Kingdom's urban and developmental transformation. The company offers comprehensive turnkey solutions, including concept development, design, execution, and fully operational handover:





Business Environments

Comprehensive design and fit-out of administrative offices, government entities, ministries, corporations, and business centers—focused on enhancing efficiency, productivity, and embodying institutional identity.



Healthcare

Full design and fit-out of hospitals and specialized medical centers, including clinical and operational departments, in accordance with the standards of the Saudi Ministry of Health, CBAHI, and JCI accreditation.



Hospitality & Tourism

Turnkey execution of hospitality projects, including hotels, resorts, tourism developments, and serviced apartments—delivered in line with brand requirements and luxury hospitality standards.



Innovation Spaces

Design and fit-out of innovation centers, idea labs, museums, libraries, and creative workspaces—enabling flexible environments that foster innovation, interaction, and entrepreneurship.



Technology

Design and fit-out of technology hubs, smart offices, and digital infrastructure for tech and telecom companies—adhering to the highest standards of technical efficiency, operational security, and digital flexibility.

Through these sectors, MIND seeks to establish a professional Saudi model in delivering integrated design and fit-out solutions—driven by quality, innovation, commitment, and national identity, and reflecting a confident Saudi capability to compete and influence both local and regional markets

VISION

To be the

FIRST SAUDI HOUSE OF EXPERTISE
AND FACTORY OF INNOVATION

in the development and fit-out of exceptional projects—creating high-quality environments that reflect professionalism and embody a national identity with a global outlook.

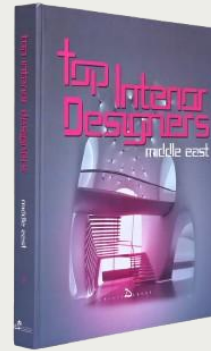
Mind in Numbers

<p>20⁺</p> <p>years of multidisciplinary design and execution experience.</p>	<p>1367⁺</p> <p>completed projects across various regions in Saudi Arabia</p>
<p>795⁺</p> <p>clients served, including ministries, authorities, and private companies.</p>	<p>1M</p> <p>SQM of delivered spaces across sectors.</p>

Awards



Design of the highest
mosque in the world.
2024



published one of our projects
in the Book of the Best top
interior in Middle East .
2020



One of our projects won the
best commercial project.
2017



Design of the first childfriendly
hospital in the Middle East
2016

Our Services

01.



PROJECT DESIGN

02.



FIT-OUT &
FURNISHING

03.



SUPERVISION &
PROJECT
MANAGEMENT

04.



EXECUTION

Our Services

01.

PROJECT DESIGN

We lead the project design process from redefining the vision and developing the overall concept, through detailed drawings and documentation, to preparing tender packages and technical specifications.

Our integrated design solutions reflect the brand identity , support functional performance, and lay a strong foundation for execution success.

www.mind.com.sa

info@mind.com.sa



9200 247 22

+966 50 006 9627



02.

FIT-OUT & FURNISHING

We provide comprehensive solutions for project furnishing and fit-out, including the supply of furniture, equipment, and technical systems—tailored to the needs of **business environments**, healthcare facilities, and specialized sectors.

All works are executed to the highest standards to ensure full operational readiness.

Our Services

03. SUPERVISION&PROJECT MANAGEMENT

We offer professional supervision services covering both on-site oversight and technical project management, led by a qualified team of certified project managers.

Our approach is based on proven project management methodologies, ensuring quality control, timeline adherence, and cost efficiency.

www.mind.com.sa

info@mind.com.sa



9200 247 22

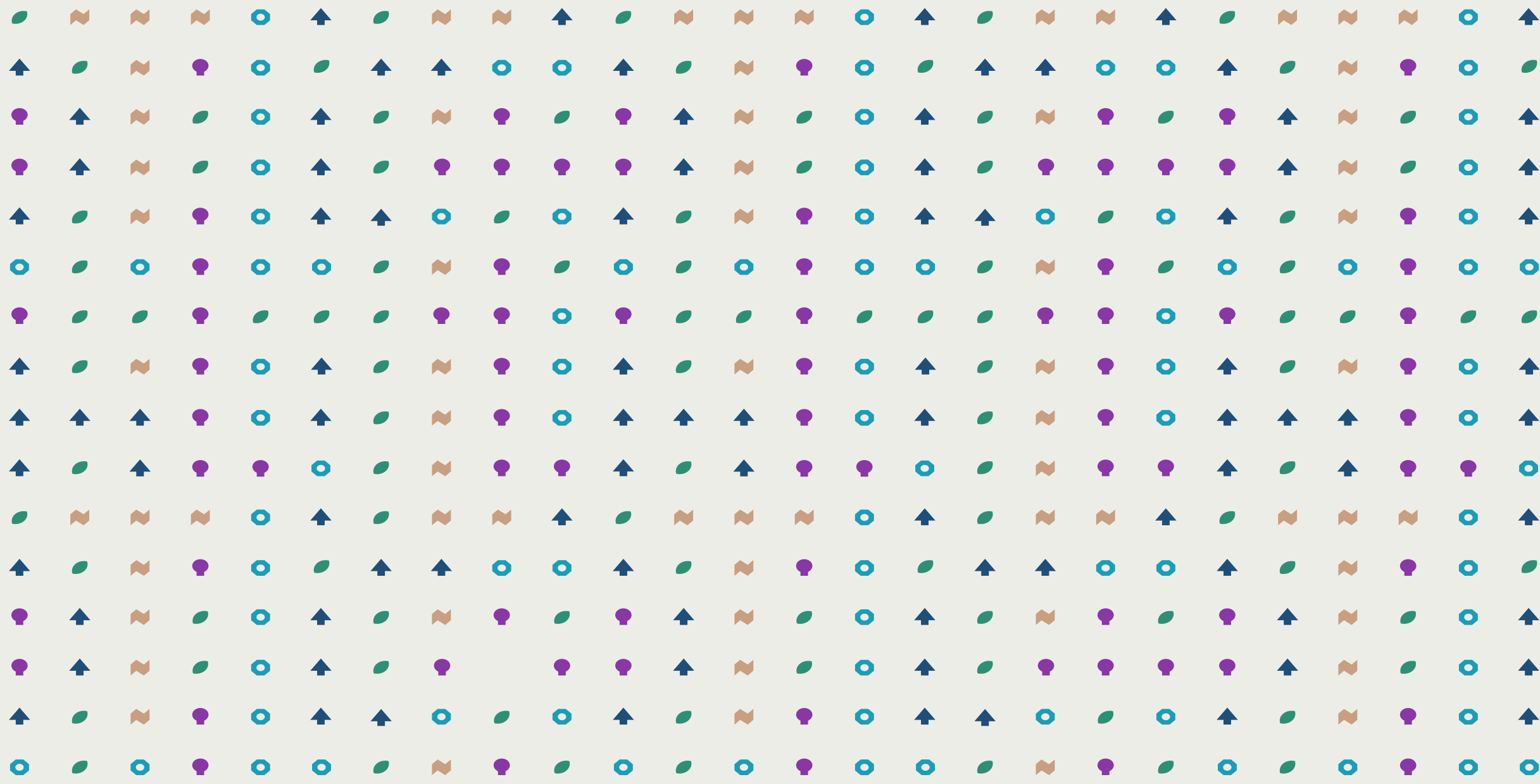
+966 50 006 9627



04. EXECUTION

We handle complete project execution—from finishing works to technical fit-out, testing, and commissioning.

Our highly qualified engineering and technical teams deliver precise execution and professional handover in line with the highest quality standards.

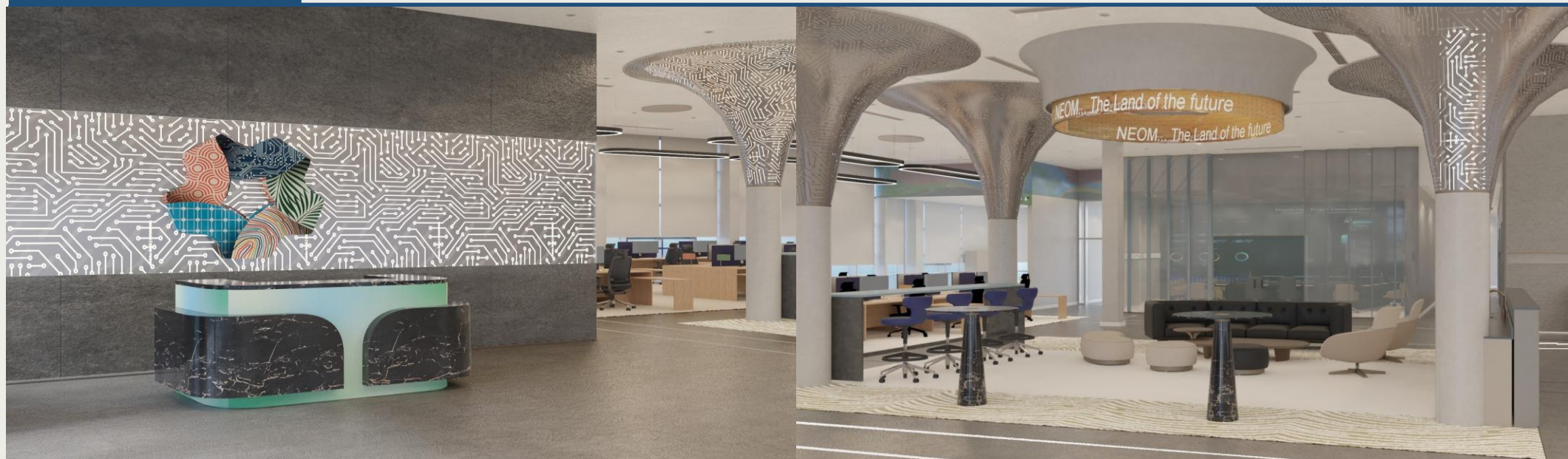


Mind Sectors





Mind Business



www.mind.com.sa

info@mind.com.sa

9200 247 22

+966 50 006 9627



Mind Business

Overview

The name “MIND” has become synonymous with creating smart and distinctive work environments that seamlessly blend corporate identity ,high functionality ,and user-centric experiences.

We provide integrated design and execution solutions for corporate headquarters and office spaces, covering interior design ,space planning , and smart operational technologies.

Our office environments are designed to enhance productivity and foster belonging ,through flexible layouts ,refined finishes , and seamless technical integration.

Our scope includes corporate headquarters , business centers, executive offices, and co-working spaces.



1. Services We Offer in the Business Sector

- . Interior design that reflects the corporate identity
- . Space planning based on operational functions
- . Comprehensive furnishing solutions, including furniture and accessories selection
- . Development of detailed construction drawings (architectural, electrical, mechanical)
- . Integration of technology, network, and smart lighting systems
- . Full execution of fit-out and furnishing works



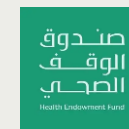


2. Our Expertise in This Sector

MIND has successfully delivered high-level office projects for major national entities, including operational headquarters and innovation centers, serving clients across technology, investment, and public sectors

3. Key Clients in the Business Sector

- . NEOM
- . Mohammed bin Salman Foundation “Misk”
- . Royal Commission for AlUla
- . National Cybersecurity Authority
- . Public Investment Fund (PIF)
- . Lean Business Services
- . Development Authorities Support Center
- . Saudi Esports Federation





Mind Healthcare



www.mind.com.sa

info@mind.com.sa

9200 247 22

+966 50 006 9627



Mind Healthcare

Overview

MIND is one of the few accredited companies in both the Saudi and Gulf markets specializing in the design and fit-out of healthcare facilities, thanks to its deep expertise and accumulated experience in this vital sector.

MIND is also a strategic partner to the Saudi Ministry of Health, collaborating in knowledge exchange and the adoption of global best practices in healthcare facility design, with the goal of enhancing the quality of healthcare infrastructure in the Kingdom.

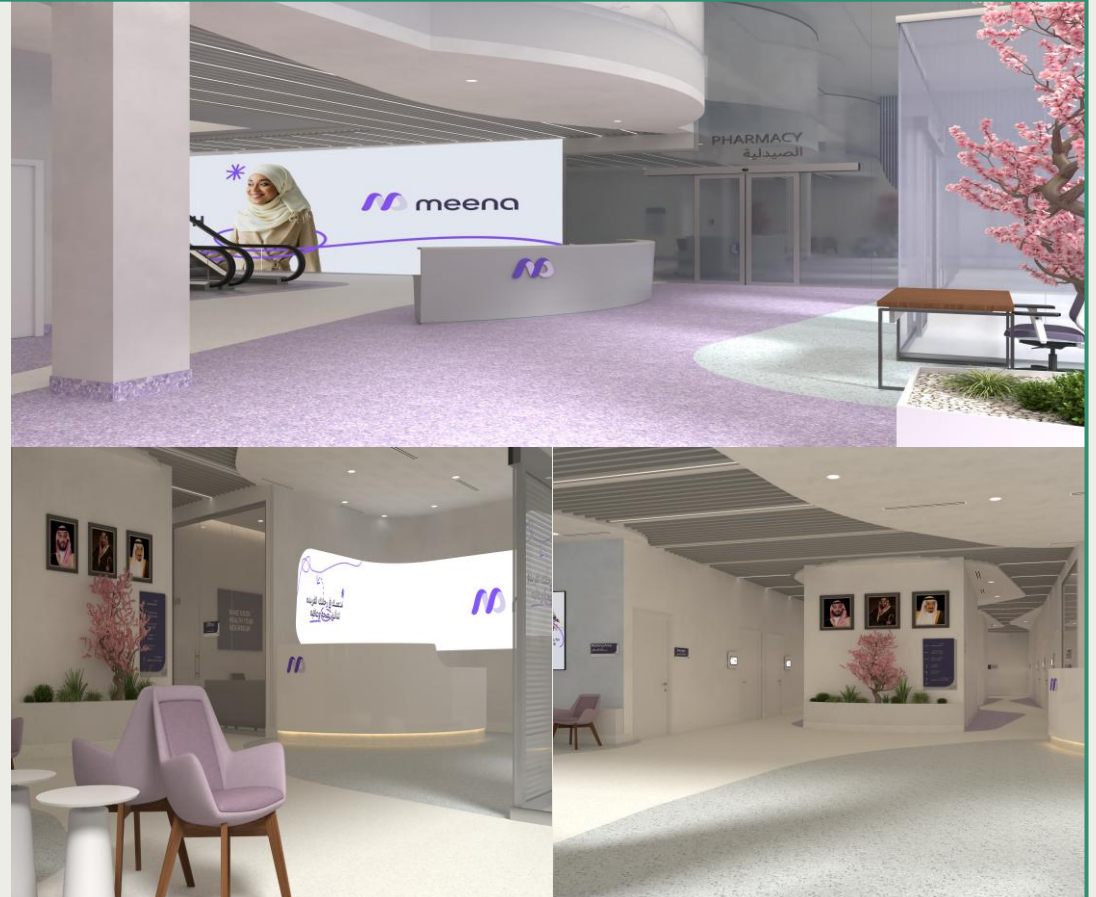
With a strong commitment to the highest medical and technical standards, MIND provides comprehensive turnkey solutions covering the full project cycle—from design and development to complete delivery and operational readiness.



1. Services We Offer in the Healthcare Sector

MIND delivers fully integrated services that cover all phases of healthcare facility projects, including:

- . Specialized interior design for hospitals, medical centers, specialty clinics, and support facilities
- . Development of operational concepts and planning of medical and clinical workflows
- . Production of coordination drawings
- . Execution of interior finishing works in compliance with infection control and patient safety standards
- . Furnishing and equipping both medical and non-medical areas
- . Coordination and integration of medical equipment and systems
- . Preparation of technical tender documents and project specifications
- . Technical supervision and full project management through to commissioning



2. Our Expertise in This Sector

MIND has extensive experience in designing and delivering a wide range of healthcare projects, including

- . General and specialized hospitals
- . Diagnostic imaging and radiology centers
- . Day surgery clinics and outpatient centers
- . Laboratories and technical support facilities

All projects are delivered in compliance with the following recognized standards:

Saudi Ministry of Health (MOH)

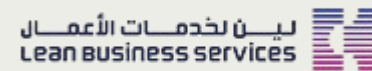
Saudi Central Board for Accreditation of Healthcare Institutions (CBAHI)

Joint Commission International (JCI):

3. Key Clients in the Healthcare Sector

MIND has extensive experience in designing and delivering a wide range of healthcare projects, including

- Ministry of Health
- King Fahad Medical City
- Al-Tawuniya – MENA Health
- Lean Business Services
- Various private sector medical centers and clinics





Mind Hospitality





Mind Hospitality

Overview

MIND brings specialized expertise in the **design and fit-out of hospitality projects**, including hotels, resorts, serviced apartments, and formal reception venues.

We deliver **comprehensive turnkey solutions** that combine design aesthetics, operational efficiency, and guest experience—adhering fully to global standards in the hospitality industry.

MIND works with international hotel operators and has a deep understanding of their architectural and technical requirements, positioning us as a qualified provider of projects that **comply with the standards of major global hotel brands**.



1. Services We Offer in the Hospitality Sector

MIND delivers fully integrated services that cover all phases of Hospitality facility projects, including:

- . Concept development tailored to the classification of the property (luxury hotels, serviced apartments, resorts, etc.)
- . Full interior design for guest rooms, lobbies, restaurants, recreational areas, and event spaces
- . High-quality finishing works that align with hospitality standards Full .
- . furnishing and fit-out (FF&E) and operational systems and equipment (OS&E)
- . Preparation of tender packages and technical specifications
- . Coordination with hotel brand operators and compliance with each brand's standards
- . Technical supervision and full project management through to handover





2. Our Expertise in This Sector

MIND has successfully delivered diverse projects within the hospitality sector, including::

- . Luxury branded hotels
- . Furnished serviced apartments
- . Tourist resorts
- . Reception halls and formal venues

All in line with international brand standards such as Hilton, Accor, IHG, and others, ensuring exceptional comfort and operational excellence.

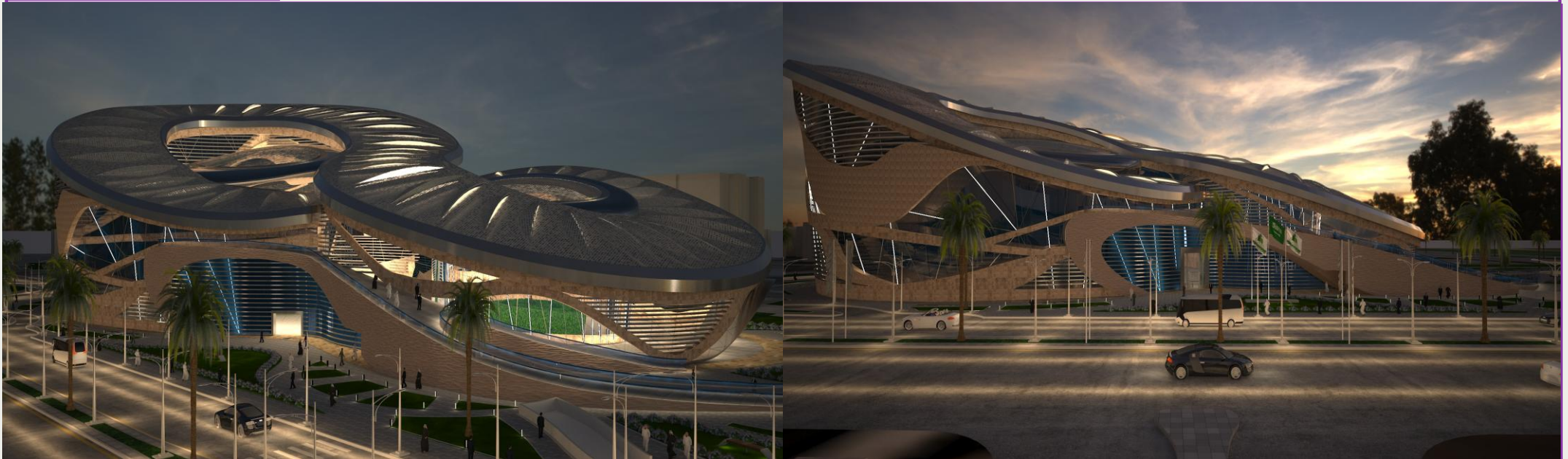
3. Key Clients in the Hospitality Sector

- Clock Tower Hotel Complex – Makkah, including
 - Fairmont Makkah
 - Mövenpick Hotel & Residences Hajar Tower
 - Swissôtel Al Maqam
 - Swissôtel Makkah
- Dur Hospitality
- Mansard Riyadh Hotel
- Local developers of serviced apartments and hospitality venues across the Kingdom





Mind Innovation



www.mind.com.sa

info@mind.com.sa

9200 247 22

+966 50 006 9627



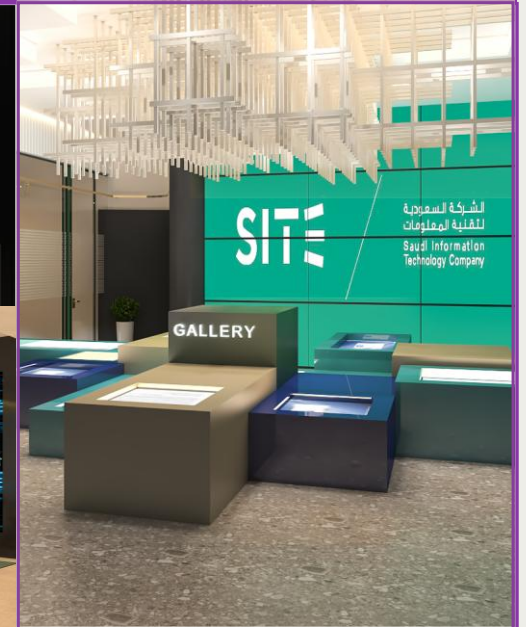
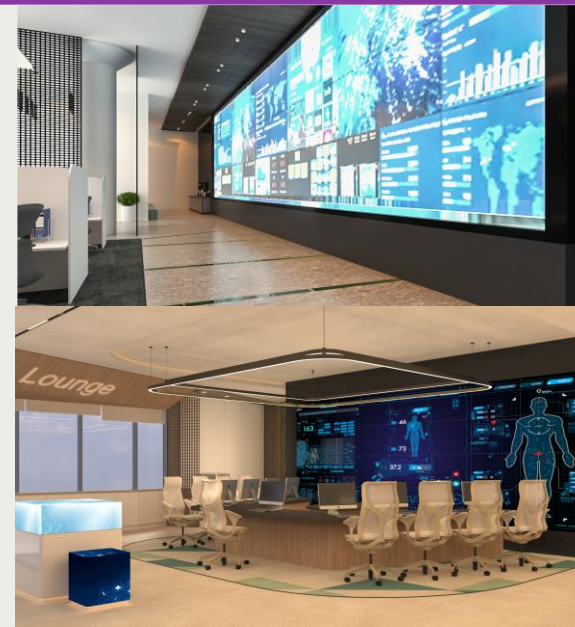
Mind Innovation

Overview

MIND empowers innovation and knowledge environments by designing and delivering smart spaces that stimulate creativity, interaction, and learning.

We develop innovation hubs, knowledge exhibitions, and innovation labs that focus on user experience, technological integration, and operational flexibility, supporting ambitious organizations in digital transformation and knowledge generation.

We believe that innovative environments are not just physical spaces—they are strategic tools that translate institutional vision into dynamic, engaging, and productive experiences.



1. Services We Offer in the Innovation Sector

- . Creative concept development (Concept Design)
- . Operational journey modeling and user experience planning
- . Contemporary interior design integrated with smart technologies
- . Flexible space planning for brainstorming and collaboration)
- . Interactive exhibition and experience design with digital media
- . Full execution of finishes, interactive systems, and visual treatments





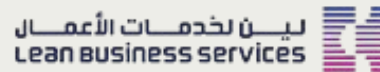
2. Our Expertise in This Sector

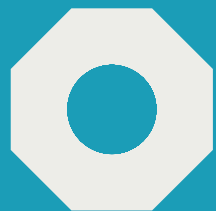
MIND has delivered high-impact innovation projects for forward-thinking organizations, blending **brand identity**, **interactive experiences**, and **high-performance functionality** to bring visionary concepts to life.

3. Key Clients in the Innovation Sector

We are proud to collaborate with leading national organizations in the fields of innovation and knowledge, including:

- . NEOM
- . Public Investment Fund (PIF)
- . Lean Business Services
- . Saudi Esports Federation
- . SITE (A PIF-owned company)
- . Museum of King Abdulaziz University





Mind Tech





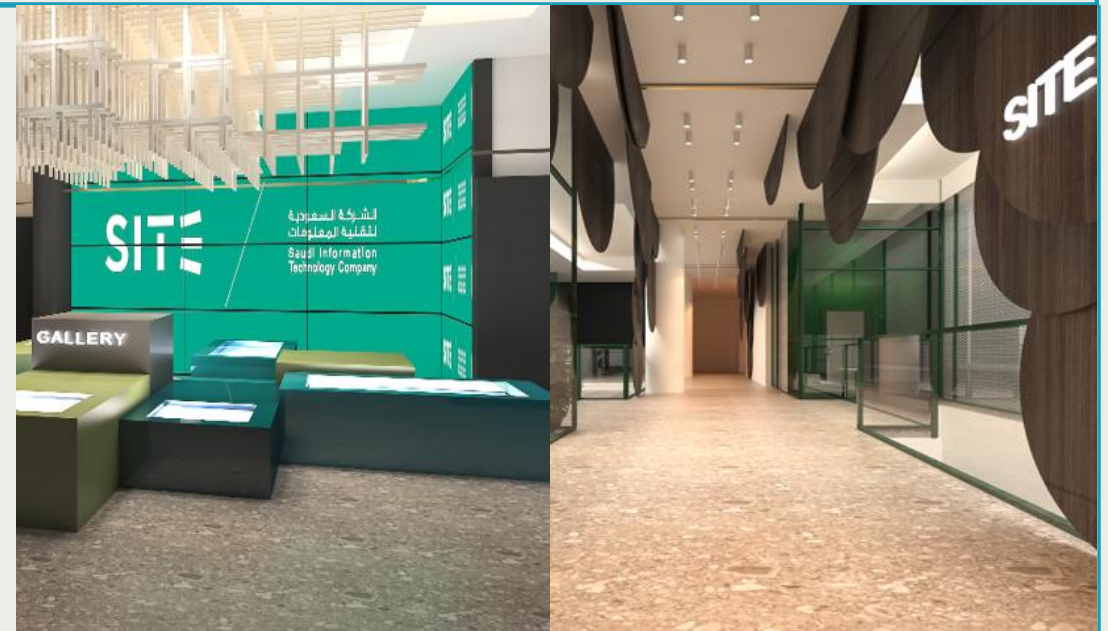
Mind Tech

Overview

MIND plays a key role in supporting technology and digital transformation initiatives by designing and delivering smart operational environments that align with rapid advancements and enhance digital infrastructure efficiency.

We design specialized spaces such as data centers, control rooms, server rooms, and technical support facilities—ensuring operational flexibility, system integrity, and cybersecurity compliance.

Our goal is to create future-ready environments that enable organizations to perform digital operations with efficiency, reliability, and scalability.



1. Services We Offer in the Innovation Sector

- . Specialized interior design for technical facilities and operations rooms
- . Full engineering documentation (architectural, electrical, mechanical, and low-current systems)
- . Design and fit-out of server and data rooms with proper cooling and safety systems
- . Ergonomic control room design that supports clarity and real-time interaction)
- . Coordination of lighting, network systems, and low-current infrastructure
- . Turnkey execution including finishes and technology integration





2. Our Expertise in This Sector

MIND has delivered advanced technology environments for national entities across telecom, cybersecurity, and data management sectors—adhering to the highest technical and operational standards.

3. Key Clients in the Tech Sector

We are proud to have worked with leading organizations in the technology and digital space, including:

- . Lean Business Services
- . SITE (a PIF-owned company)
- . National Cybersecurity Authority
- . Ministry of Health
- . Alpha Digital
- . Accelerated Solutions Company
- . Atheeb Telecom (GO Telecom)



Our Projects



BUSINESS SECTOR

NEOM EXECUTIVE BUILDING

Project Overview

A state-of-the-art smart facility located in NEOM, covering approximately 3,000 square meters. The project encompasses executive offices, control halls, and innovation-oriented spaces, all crafted to embody NEOM's bold and future-centric vision.

The interior design focuses on seamless technological integration, spatial fluidity, and progressive aesthetics, fully aligned with NEOM's values of innovation and sustainability.

Key Information

- . Location: NEOM
- . Area: ~3,000 sqm
- . Year: 2024

www.mind.com.sa

info@mind.com.sa



9200 247 22

+966 50 006 9627

THE HEADQUARTERS OF MISK FOUNDATION

Project Overview

Development of the business environment and supervision of the design and execution of the headquarters of the Misk Foundation offices located in the Diplomatic Quarter, Riyadh.

The design aims to reflect the dynamism of business within a creative and inspiring work environment..

Key Information

- . Location Riyadh
- . Area:~Approx.1,200sqm
- . Year:2018

www.mind.com.sa

info@mind.com.sa



9200 247 22

+966 50 006 9627

BUSINESS SECTOR

THE ROYAL COMMISSION FOR ALULA – OFFICE OF HIS HIGHNESS THE GOVERNOR & EXECUTIVE OFFICE

Project Overview

Leveraging extensive experience in developing executive offices and facilities, the Office of His Highness the Governor was designed in a contemporary style with natural elements inspired by the AlUla region. The space features a wide layout and robust design that embodies the unique character of AlUla.

Key Information

- . Location Riyadh
- . Area: Approx. 700 sqm
- . Year: 2019

www.mind.com.sa

info@mind.com.sa



9200 247 22

+966 50 006 9627

SAUDI FEDERATION OF ELECTRONIC SPORTS HEADQUARTERS

Project Overview

A project located in Riyadh, within the Economic Gate complex, covering an area of approximately 4,000 square meters. The facility includes halls dedicated to electronic gaming and international competitions. It features a simple yet elegant design that caters to the needs of both employees and gamers, creating a highly modern and tech-driven work environment..

Key Information

- . Location Riyadh -Economic Gateway
- . Area: Approx. 4,000 sqm
- . Year:2022

www.mind.com.sa

info@mind.com.sa



9200 247 22

+966 50 006 9627



BUSINESS SECTOR

DEVELOPMENT AUTHORITIES SUPPORT CENTER HEADQUARTERS

Project Overview

The project includes the interior design of the headquarters of the Development Authorities Support Center, along with several other authorities. The goal was to establish a functional and institutional workspace that enhances operational efficiency and adaptability. The design also considered potential future expansions aligned with organizational growth

Key Information

- . Location: Riyadh
- . Area: Approx. 6,000 sqm
- . Year: 2024

www.mind.com.sa

info@mind.com.sa



9200 247 22

+966 50 006 9627



BUSINESS SECTOR

HEALTH ENDOWMENT FUND

Project Overview

A project located in Riyadh, featuring a modern and dynamic work environment designed with a color scheme that reflects the Fund's identity. The interior combines simplicity and elegance to create a contemporary space that supports productivity and institutional character.

Key Information

- . Location Riyadh
- . Area: Approx. 600 sqm
- . Year: 2023

www.mind.com.sa

info@mind.com.sa



9200 247 22

+966 50 006 9627



BUSINESS SECTOR PUBLIC INVESTMENT FUND BADEEL COMPANY

Project Overview

Located on the 11th floor of the Kingdom Tower in Riyadh, this project serves as the headquarters of Badeel, a company specializing in clean and renewable energy. The interior design reflects the company's focus on sustainability through a fresh and minimalistic style, while also conveying the strength and formality associated with the Public Investment Fund

Key Information

- . **Location:** Riyadh – Kingdom Tower (11th Floor) .
- . **Area:** Approx. 600 sqm
- . **Year:**2024

www.mind.com.sa

info@mind.com.sa



9200 247 22

+966 50 006 9627

BUSINESS SECTOR NATIONAL CENTER FOR PALMS & DATES

Project Overview

The project involved designing a unique work environment inspired by natural materials such as wood, stone, and ropes. A monochrome color scheme was applied—using one color and its shades in carefully balanced proportions—to create visual depth, spaciousness, and harmony. The interior features a variety of decorative elements and forms that reflect the cultural and environmental identity of the center.

Key Information

- . Location: Riyadh
- . Area: Approx. 1,200 sqm
- . Year: 2018

www.mind.com.sa

info@mind.com.sa



9200 247 22

+966 50 006 9627



BUSINESS SECTOR

TILAD CORPORATION ENVIRONMENTAL CONSULTING

Project Overview

The project involved creating a work environment inspired by natural elements such as wood, stone, and ropes. A monochrome color scheme—utilizing a single color and its shades in precise proportions—was applied to provide depth, spaciousness, and harmony throughout the space. The design incorporates a variety of decorative elements and forms that reflect the company's identity and its environmental consulting specialization.

Key Information

- . Location: Riyadh
- . Area: Approx. 1,000 sqm
- . Year: 2018

www.mind.com.sa

info@mind.com.sa



9200 247 22

+966 50 006 9627



BUSINESS SECTOR
PUBLIC INVESTMENT FUND
SITE COMPANY

Project Overview

This project was developed for SITE Company in Riyadh to create an open and modern workplace environment that accommodates various work modes. The interior design incorporated a thoughtful distribution of facilities including phone booths, online meeting zones, individual workstations, meeting rooms, lounge areas, and break spaces.

The design followed a contemporary luxury style, aiming to deliver a comfortable and adaptive workspace that suits all users' needs..

Key Information

- . Location: Riyadh
- . Area: Approx. 3,800 sqm
- . Year: 2019

www.mind.com.sa

info@mind.com.sa

Site The Site logo, consisting of the word "Site" in a bold, dark green, sans-serif font, followed by a stylized icon of a building or structure in the same color.



9200 247 22

+966 50 006 9627



#HEalthcare Sector

CHILDREN'S HOSPITAL KING FAHAD MEDICAL CITY

Project Overview

This is the first hospital project in the Middle East designed as a child-friendly environment, with a focus on supporting the psychological and emotional needs of young patients and their families. Spanning an area of approximately 25,000 sqm, the interior design aims to create a healing and human-centered atmosphere that balances functionality with comfort.

Key Information

- . **Location:** Riyadh-King Fahad Medical City
- . **Area:** Approx. 25,000 sqm
- . **Year:** 2016

www.mind.com.sa

info@mind.com.sa



9200 247 22

+966 50 006 9627



#HEalthcare Sector

MINA HOSPITALS EMERGENCY & AL-JISR LOCATIONS

Project Overview

This project includes the design of two major healthcare facilities in Mina: the Mina Emergency Hospital and Mina Al-Jisr Hospital. Covering an area of over 15,000 sqm, the interior design was developed to accommodate large-scale patient flow and ensure high operational efficiency during the Hajj season.

The facilities include emergency departments, inpatient wards, outpatient clinics, and support areas—designed to balance functionality, accessibility, and patient comfort in a context of high demand and limited time..

Key Information

- . **Location:** Makkah-Mina(Emergency+Al-jisr)
- . **Area:** Over. 15,000 sqm
- . **Year:** 2025

www.mind.com.sa

info@mind.com.sa



9200 247 22

+966 50 006 9627



#HEalthcare Sector

Tawuniya Hospitals Meena Healthcare

Project Overview

Located in Riyadh, this project marks the launch of Tawuniya's Mina Healthcare network, laying the foundation for a series of healthcare developments across the Kingdom.

The initiative includes a variety of medical centers and specialized clinics, designed to deliver high-quality care with operational efficiency and a unified brand experience. Each facility ranges in size from 500 to 5,000 sqm, reflecting flexibility in planning and adaptability to community needs...

Key Information

- . **Location:** Riyadh
- . **Area:** 5,000-500sqm per facility
- . **Year:** 2025

www.mind.com.sa

info@mind.com.sa



9200 247 22

+966 50 006 9627



#HOSPITALITY SECTOR MÖVENPICK HOTEL CLOCK TOWER

Project Overview

A hospitality project located in Makkah – Hajar Tower, one of the King Abdulaziz Endowment Towers overlooking the Holy Mosque. The tower consists of 10 floors, featuring 1,200 rooms and 403 suites. The interior design was developed to reflect Mövenpick's signature blend of luxury, comfort, and cultural sensitivity.

Key Information

- . **Location:** Makkah- Hajar Tower
- . **Year:** 2021

www.mind.com.sa

info@mind.com.sa



9200 247 22

+966 50 006 9627



#HOSPITALITY SECTOR

FAIRMONT HOTEL DESIGN OF THE HIGHEST MOSQUE IN THE WORLD

Project Overview

A landmark project located in the Makkah Clock Tower, covering approximately 5,000 square meters. This mosque is recognized as the highest in the world, standing at 150.37 meters, with a direct view of the Holy Mosque and the Kaaba.

It consists of 2 floors and accommodates up to 2,500 worshippers. The international hotel brand Fairmont was selected as the operator. The interior design combines spiritual significance with refined elegance, tailored to the unique location and sacred context.

Key Information

- . **Location:** Makkah –Clock Tower
- . **Area:** Over 5,000sqm
- . **Year:** 2024

www.mind.com.sa

info@mind.com.sa



9200 247 22

+966 50 006 9627



#HOSPITALITY SECTOR SWISSÔTEL HOTEL

Project Overview

A hospitality project located in Makkah, comprising lounges, restaurants, meeting rooms, and various public facilities. The interior design reflects Swissôtel's global standards of elegance and functionality, tailored across a high-rise development spanning 47 floors.

Key Information

- . **Location:** Makkah
- . **Floors:** 47 floors
- . **Scope of Work:** interior Design
- . **Year:** 2024

www.mind.com.sa

info@mind.com.sa



9200 247 22

+966 50 006 9627

#HOSPITALITY SECTOR THE VALLEY RESORT

Project Overview

Located in one of the natural valleys of the Arqah region in Riyadh, the project embraces and preserves the site's natural topography to offer visitors scenic views and outdoor experiences.

The resort includes a hotel, residential villas, a cluster of restaurants and cafés, a business center, and landscaped outdoor areas with gardens and swimming pools. The interior design was executed in multiple styles—modern for the hotel, and a mix of French and Eastern English themes for the restaurants.

Key Information

- . **Location:** Riyadh-Arqah Region
- . **Area:** Approx.15,000sqm
- . **Year:** 2017

www.mind.com.sa

info@mind.com.sa



9200 247 22

+966 50 006 9627



#HOSPITALITY SECTOR MANSARD HOTEL

Project Overview

The project involves the interior design of the **Mansard Gallery**, a luxury exhibition space located within the Mansard Hotel on Prince Mohammed bin Salman Road in Riyadh. The gallery spans two floors and includes an elegant reception area, exhibition zones, premium boutiques, and multi-purpose halls. The design follows a **modern classical** style that reflects sophistication and aligns with the high-end identity of the hotel brand.

Key Information

- . **Location:** Riyadh-Prince Mohammad bin Salman Road
- . **Area:** Approx.2,000sqm
- . **Year:** 2023

www.mind.com.sa

info@mind.com.sa

MANSARD

RIYADH

A RADISSON COLLECTION HOTEL



9200 247 22

+966 50 006 9627



#HOSPITALITY SECTOR DARA HOTEL

Project Overview

The first branch of the DARA Hotel project is located in Riyadh. The main objective was to **reflect local culture in a modern** way using cost-efficient materials. MIND designed the initial branch and developed both the **design manual and brand guideline** to be used for future locations.

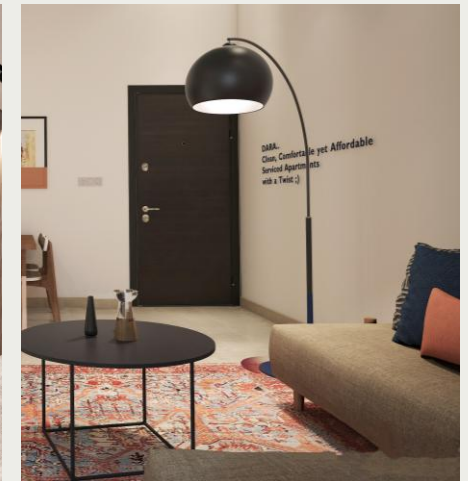
The hotel includes various facilities such as reception lounges, a restaurant, and five types of rooms and suites—offering a well-rounded hospitality experience with a locally inspired modern identity.

Key Information

- . **Location:** Riyadh
- . **Area:** Approx.10,000sqm
- . **Year:** 2017

www.mind.com.sa

info@mind.com.sa



9200 247 22

+966 50 006 9627



#HOSPITALITY SECTOR

LE TRAIN BLEU RESTAURANT DOHA

Project Overview

We were appointed as consultants for the design and selection of fixed and movable furniture pieces for the Le Train Bleu restaurant in Doha, Qatar. Our scope included developing executive-level details for the manufacturing phase, ensuring that both aesthetic and functional aspects aligned with the refined identity of the space.

Key Information

- . **Location:** Qatar-Doha
- . **Area:** Approx.2,000sqm
- . **Year:** 2017

www.mind.com.sa

info@mind.com.sa



9200 247 22

+966 50 006 9627



#HOSPITALITY SECTOR

VOGUE

FIRST BRANCH IN SAUDI ARABIA

Project Overview

This project marks the first branch of the prestigious **VOGUE international brand** in Saudi Arabia, located at **Riyadh Park Center** in the northern part of the capital. The space features a fine dining experience alongside displays of top global brands in jewelry and fashion.

The design was tailored to accommodate this range of luxury activities while preserving the iconic commercial identity of **VOGUE**. The scope also included the **custom manufacturing of furniture** to match the refined aesthetic

Key Information

- . **Location:** Riyadh-Riyadh Park Center
- . **Area:** Approx.1,300sqm
- . **Year:** 2018

www.mind.com.sa

info@mind.com.sa

VOGUE



9200 247 22

+966 50 006 9627



#HOSPITALITY SECTOR AURA ELITE GYM & SPA

Project Overview

A luxury gym and spa located in **Abhor – Jeddah**, offering a full range of wellness and lifestyle services. Spanning approximately 4,000 sqm, the center includes restaurants, a coffee shop, a salon, and a nursery—providing a comprehensive and elegant environment for relaxation and self-care.

Key Information

- . **Location:** Jeddah-Abhor
- . **Area:** Approx.4,000sqm
- . **Year:** 2022

www.mind.com.sa

info@mind.com.sa



9200 247 22

+966 50 006 9627



#INNOVATION SECTOR

KING ABDULAZIZ UNIVERSITY MUSEUM

Project Overview

Located within King Abdulaziz University in Jeddah, this museum stands as a major cultural and academic landmark in Saudi Arabia. It is designed as an interactive space that showcases the university's legacy and presents national and intellectual heritage in a modern educational environment. The project spans approximately 26,000 sqm, featuring permanent and temporary exhibition halls, educational facilities, and multi-purpose spaces—positioning it as a comprehensive cultural destination for students, visitors, and researchers alike..

Key Information

- . **Location:** Jeddah-King Abdulaziz University
- . **Area:** .26,000sqm
- . **Year:** 2018

www.mind.com.sa

info@mind.com.sa



9200 247 22

+966 50 006 9627



#INNOVATION SECTOR INNOVATION CENTER TANMIA COMPANY

Project Overview

Located in Riyadh, this project was developed for Tanmia Company as a dynamic space to foster innovation, creative thinking, and solution development. The design reflects a modern institutional identity, integrating flexibility and smart technologies.

Covering an area of 1,000 sqm, the center was delivered as a turnkey design & build project, ensuring full alignment between concept, execution, and future-oriented functionality..

Key Information

- . **Location:** Riyadh
- . **Area:** 1,000sqm
- . **Year:** 2025

www.mind.com.sa

info@mind.com.sa



9200 247 22

+966 50 006 9627



#INNOVATION SECTOR

NEOM EXECUTIVE BUILDING

Project Overview

A state-of-the-art smart facility located in NEOM, covering approximately 3,000 square meters. The project encompasses executive offices, control halls, and innovation-oriented spaces, all crafted to embody NEOM's bold and future-centric vision. The interior design focuses on seamless technological integration, spatial fluidity, and progressive aesthetics, fully aligned with NEOM's values of innovation and sustainability.

Key Information

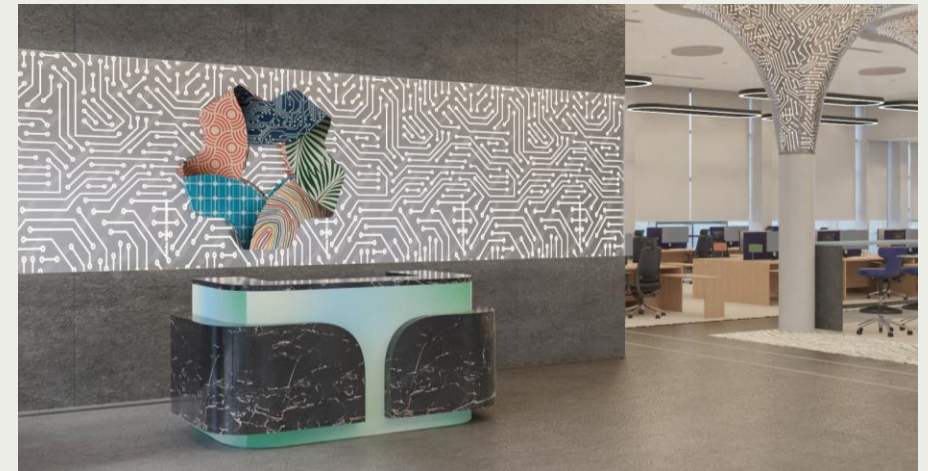
- . Location: NEOM
- . Area: .3,000sqm
- . Year: 2024

www.mind.com.sa

info@mind.com.sa



نيوم, NEOM



9200 247 22

+966 50 006 9627



#INNOVATION SECTOR PUBLIC INVESTMENT FUND SITE COMPANY

Project Overview

Located in Riyadh, this project represents one of the early innovation hubs developed for **SITE Company**, a subsidiary of the **Public Investment Fund (PIF)**. The facility features cutting-edge technologies and spaces designed to support digital and technical solution development.

The scope included both **design and supervision**, executed to meet global standards for smart, flexible, and innovation-driven work environments.

Key Information

- . **Location:** Riyadh
- . **Year:** 2018

www.mind.com.sa

info@mind.com.sa

Site The SITE logo, consisting of the word "Site" in a bold, dark green sans-serif font, followed by a stylized icon of a building or structure in the same color.



9200 247 22

+966 50 006 9627



#INNOVATION SECTOR LEAN BUSINESS SERVICES CENTER OF EXCELLENCE

Project Overview

Located in Riyadh, the **Center of Excellence** by **Lean Business Services** was developed to support digital transformation and foster a culture of innovation in the delivery of government and healthcare services.

The center spans approximately 8,000 sqm, designed according to international best practices in spatial planning, operational flexibility, and technology integration—ensuring enhanced performance and institutional alignment.

Key Information

- . **Location:** Riyadh
- . **Area:** .8,000sqm
- . **Year:** 2025

www.mind.com.sa

info@mind.com.sa

لين بخدمات الأعمال
Lean business services



9200 247 22

+966 50 006 9627



#INNOVATION SECTOR PUBLIC INVESTMENT FUND SITE COMPANY

Project Overview

Located in Riyadh's Digital City, this project was developed for SITE Company, a subsidiary of the Public Investment Fund (PIF). It is a fully integrated technology facility featuring advanced operational zones and high-spec control rooms.

The interior design was crafted to deliver a smart, secure, and efficient environment that supports real-time monitoring and control operations—aligned with the digital infrastructure of its location.

Key Information

. **Location:** Riyadh –Digital City

. **Year:** 2017

www.mind.com.sa

info@mind.com.sa

Site The SITE logo, consisting of the word "Site" in a bold, dark green, sans-serif font, followed by a stylized icon of a building or structure in the same color.



9200 247 22

+966 50 006 9627



#INNOVATION SECTOR SAUDI FEDERATION OF ELECTRONIC SPORTS- HEADQUARTERS

Project Overview

A project located in Riyadh, within the Economic Gate complex, covering an area of approximately 4,000 square meters.

The facility includes halls dedicated to electronic gaming and international competitions. It features a simple yet elegant design that caters to the needs of both employees and gamers, creating a highly modern and tech-driven work environment.

Key Information

- . **Location:** Riyadh – Economic Gateway
- . **Area:** . Approx. 4,000 sqm
- . **Year:** 2022

www.mind.com.sa

info@mind.com.sa



9200 247 22

+966 50 006 9627



#TECH SECTOR

LEAN BUSINESS SERVICES CENTER OF EXCELLENCE

Project Overview

Located in Riyadh, the Center of Excellence by Lean Business Services was developed to support digital transformation and foster a culture of innovation in the delivery of government and healthcare services.

The center spans approximately 8,000 sqm, designed according to international best practices in spatial planning, operational flexibility, and technology integration—ensuring enhanced performance and institutional alignment..

Key Information

- . **Location:** Riyadh
- . **Area:** 8,000 sqm
- . **Year:** 2025

www.mind.com.sa

info@mind.com.sa

لين بخدمات الأعمال
Lean Business Services



9200 247 22

+966 50 006 9627



#TECH SECTOR

PUBLIC INVESTMENT FUND SITE COMPANY

Project Overview

Located in **Riyadh**, this project represents one of the early innovation hubs developed for **SITE Company**, a subsidiary of the **Public Investment Fund (PIF)**. The facility features cutting-edge technologies and spaces designed to support digital and technical solution development.

The scope included both **design and supervision**, executed to meet global standards for smart, flexible, and innovation-driven work environments..

Key Information

- . **Location:** Riyadh
- . **Year:** 2018

www.mind.com.sa

info@mind.com.sa

Site



9200 247 22

+966 50 006 9627



#TECH SECTOR ALPHA DIGITAL COMPANY

Project Overview

This project was developed for **Alpha Digital Company** in **Riyadh** in 2025, with the aim of creating a fully integrated digital workspace that supports innovation and transformation.

The scope included interior design and execution, delivering a high-performance environment that reflects the company's digital identity while ensuring flexibility, technology integration, and an enhanced user experience.

Key Information

- . **Client:** Alpha Digital Company
- . **Location:** Riyadh
- . **Year:** 2025

www.mind.com.sa

info@mind.com.sa



9200 247 22

+966 50 006 9627



#TECH SECTOR

ETIHAD ATHEEB TELECOM COMPANY

Project Overview

This project was developed for Etihad Atheeb Telecom Company in **Riyadh** in 2024, focusing on the creation of a smart and integrated workspace that supports telecom operations and digital services.

The interior design emphasizes operational efficiency, spatial flexibility, and alignment with the company's corporate identity—supporting its readiness for growth and expansion in the telecom sector

Key Information

- . **Client:** Etihad Atheeb Telecom Company
- . **Location:** Riyadh
- . **Year:** 2024

www.mind.com.sa

info@mind.com.sa



9200 247 22

+966 50 006 9627

#TECH SECTOR

ACCELERATED SOLUTIONS COMPANY

Project Overview

This project was developed for **Accelerated Solutions Company** in **Riyadh** in 2024, focusing on designing a modern, efficient workspace that supports digital transformation and operational excellence.

Spanning approximately 2,000 sqm, the design features flexible layouts, collaborative zones, and integrated technologies—reflecting the company's innovative approach and professional identity..

Key Information

- . **Client:** Accelerated Solutions Company
- . **Location :** Riyadh
- . **Area:** .2,000 sqm
- . **Year:** 2024

www.mind.com.sa

info@mind.com.sa



9200 247 22

+966 50 006 9627



Contact us

www.mind.com.sa

info@mind.com.sa

9200 247 22

+966 50 006 9627